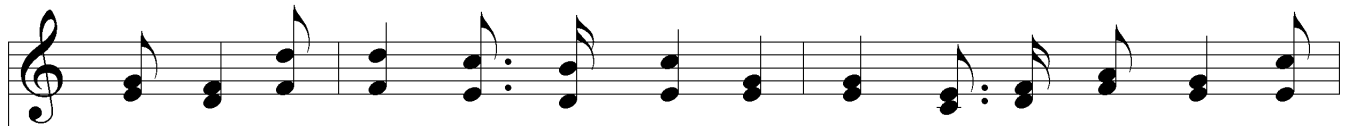


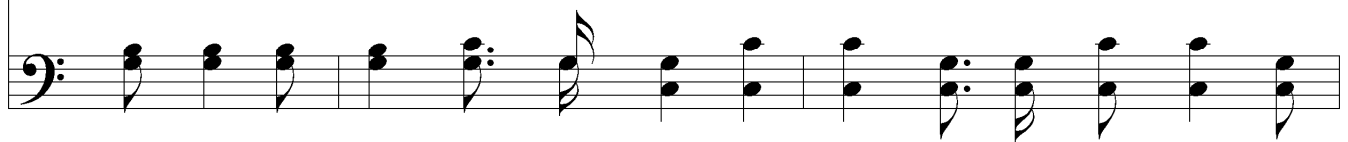
# The Mountains of Faith



1. I'm seek - ing the coun - try where Je - sus has gone; I'm fac - ing the  
 2. I've climbed to the sum - mit of ho - ly de - sire, But on - ward and  
 3. I've left all the fogs of the val - ley be - hind, And here the bright  
 4. I see the fair cit - y where Je - sus a - waits, I see the bright



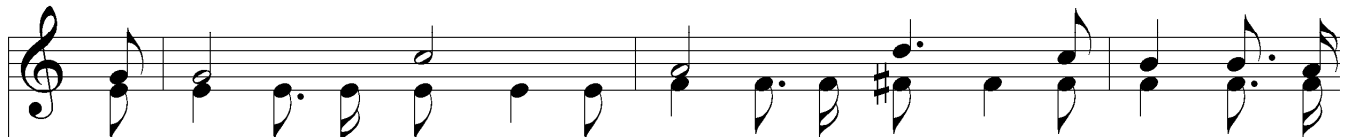
beau - ty of heav - en's bright dawn; I'm climb - ing the moun - tains, the  
 up - ward my soul doth as - pire; I see in the sun - light some  
 sun - light for - ev - er I find; The clouds are be - neath me, a -  
 walls with their wide o - pen'd gates; I'm climb - ing the moun - tains, but



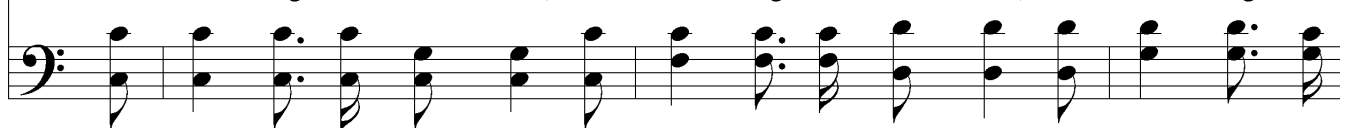
moun - tains of faith, And now I can see o'er the riv - er of death.  
 high - er peaks' glow, And strong in my Sav - ior, still up - ward I go.  
 bove is my home, And Christ, my dear Sav - ior, in - vites me to come.  
 soon I'll a - rise, And leave the last peak for my home in the skies.



## Chorus



I'm climb - ing, climb - ing, I'm climb - ing the  
 I'm climb - ing the moun - tains, I'm climb - ing the moun - tains, I'm climb - ing the



# *The Mountains of Faith*

moun - tains of faith; Still high - er I climb, to  
moun - tains, the moun - tains of faith;

re - gions sub - lime, On the peaks of the moun - tains of faith.  
the moun - tains of faith.

The image shows a musical score for the hymn 'The Mountains of Faith'. It consists of two systems of music. Each system has a vocal line (treble clef) and a piano accompaniment line (bass clef). The lyrics are written below the vocal line. The first system covers the first two lines of lyrics, and the second system covers the last two lines. The music is in a common time signature and features a mix of eighth and quarter notes, with some longer notes held across measures.