

The Bird With A Broken Wing

D \flat

Effective as a solo

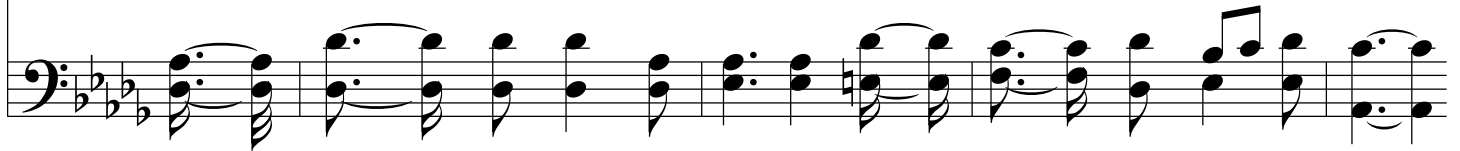
mp



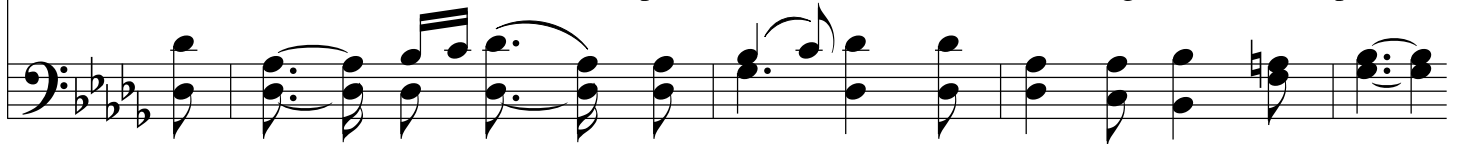
1. I walked in the wood-land mead-ows, Where sweet the thrush-es sing,
2. I found a young life bro-ken By sin's se-duc-tive art,
3. But the bird with a bro-ken pin-ion, Kept an-oth-er from the snare,



And found on a bed of moss-es, A bird with a bro-ken wing,
And touched with a Christ-like pit-y, I took him to my heart;
And the life that sin had strick-en, Raised an-oth-er from de-spair;



I healed its wing, and each morn-ing It sang its old sweet strain,
He lived with a nobl-er pur-pose, And strug-gled not in vain,
Each loss has its own com-pen-sa-tion, There's heal-ing for each pain,



But the bird with the bro-ken pin-ion, Nev-er soared as high a-gain;
But the life that sin had strick-en, Nev-er soared as high a-gain;
But the bird with the bro-ken pin-ion, Nev-er soared as high a-gain;



The Bird With A Broken Wing

Musical notation for the vocal line, starting with a mezzo-forte (*m*) dynamic and ending with a pianissimo (*pp*) dynamic. The melody is written in a treble clef with a key signature of three flats (B-flat, E-flat, A-flat) and a 4/4 time signature. The piece concludes with a double bar line.

But the bird with the bro - ken pin - ion, Nev - er soared as high a - gain.
But the life that sin had strick-en, Nev - er soared as high a - gain.
But the bird with the bro - ken pin - ion, Nev - er soared as high a - gain.

Musical notation for the bass line, written in a bass clef with a key signature of three flats and a 4/4 time signature. The accompaniment consists of chords and single notes, providing harmonic support for the vocal line. The piece concludes with a double bar line.