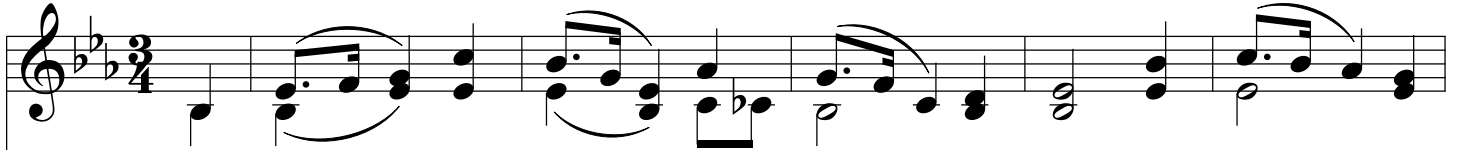
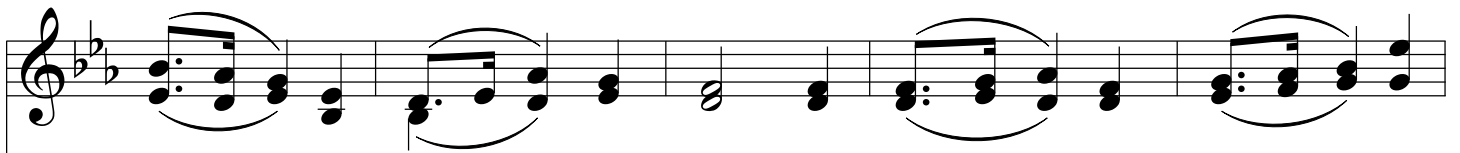


Our Surest Stay

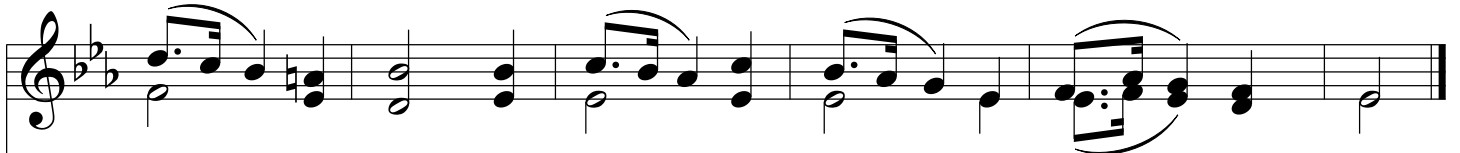
E♭



1. When soft - ly falls the twi - light hour, O'er moor and
2. In sol - emn mid - night's si - lence deep, When Na - ture's
3. And when with red'n - ing blush of morn The new - born
4. When mid - day's burn - ing heat we feel, When dai - ly



moun - tain, field and flow'r, How sweet to leave a
voice is hash'd in sleep, Then heav - y hearts with
day be - gins to dawn, Then up - ward to the
cares our hearts would steal, O, then to heav'n we



world of care, And lift to heav'n the voice of pray'r!
grief op - press'd May find in pray'r the sweet - est rest.
mer - cy - seat Let pray'r as - cend like in - cense sweet.
look a - way, And find in pray'r our sur - est stay.

