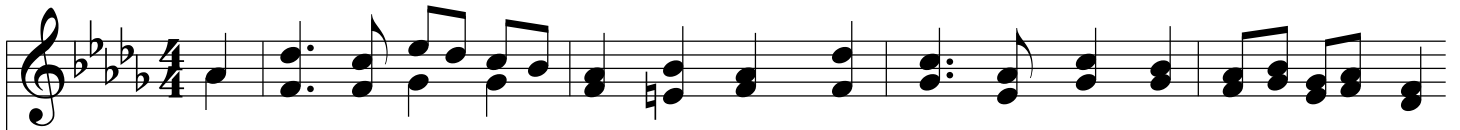
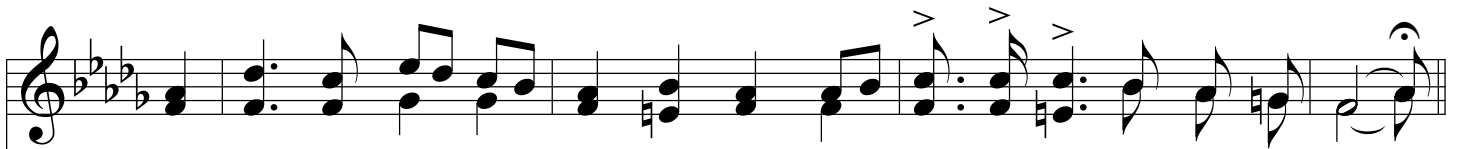


Live In Sunshine

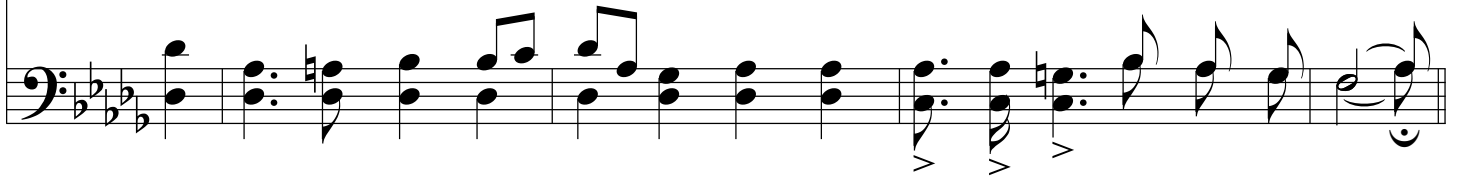
D \flat



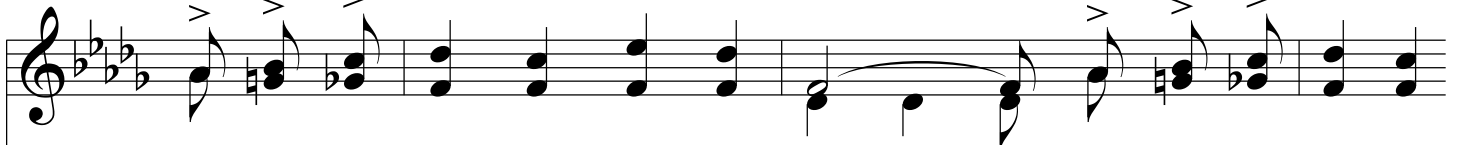
1. This world is not a place for gloom, While sun-shine lights the morn-ing sky,
2. This world is not a place for wrong, While God's dear hand is o-ver all;
3. This world is not a place for tears While Je-sus com-forts those who weep;
4. This world is not a place for sin, For shame, or sor-row, or de-spair,



While blos-soms store their sweet per-fume, For ev-'ry one who pass-es by.
Go meet your sor-row with a song, And noth-ing e-vil shall be-fall.
Let hope and joy re-place your fears— His watch-ful care your ways will keep.
While Je-sus' blood can make us clean, While He will all our bur-dens bear.



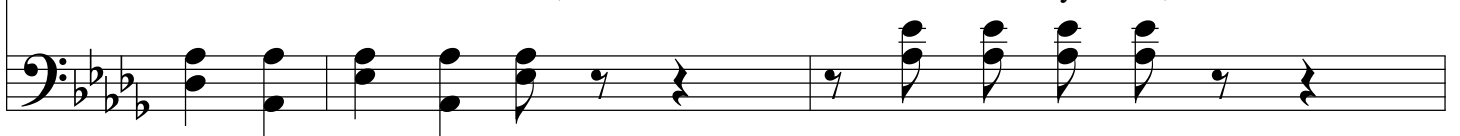
Chorus



Then let not grief your heart be-guile, Meet ev-'ry trou-ble
be-guile,



with a smile; Are an-y sad, go make them
a smile, Are an-y sad,



Live In Sunshine

glad, go make them glad, And live in sun - shine all the while.

The image shows a musical score for the song "Live In Sunshine". It consists of two staves: a vocal line in the treble clef and a bass line in the bass clef. The key signature has four flats (B-flat, E-flat, A-flat, D-flat), and the time signature is 7/8. The vocal line begins with a half note followed by a melodic phrase. The bass line provides a harmonic accompaniment with chords and single notes. The lyrics are: "glad, go make them glad, And live in sun - shine all the while." The score ends with a double bar line.