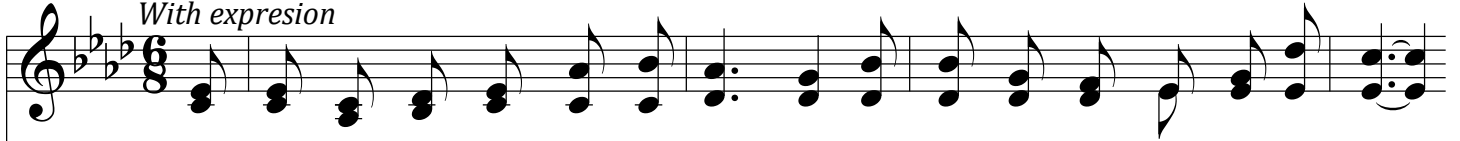


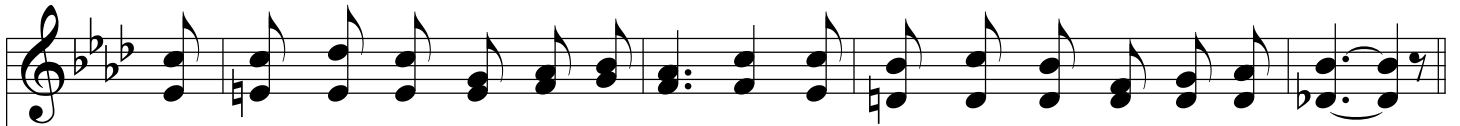
Jesus Is Calling You Home

A \flat

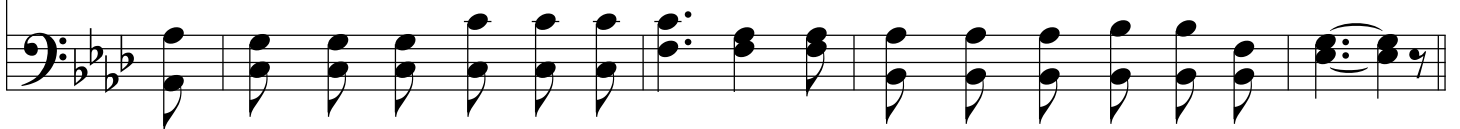
With expression



1. I wan-der'd in dark - ness and sor - row, My soul sore dis-tress'd and a - lone;
2. I lin-ger'd and lin-ger'd, still tread - ing A path by sharp bri - ars o'er grown,
3. At last fill'd with hor - ror of sin - ning, For which I could nev - er a - tone;
4. Since then I have dwelt close to Je - sus, And nev - er been tempt-ed to roam



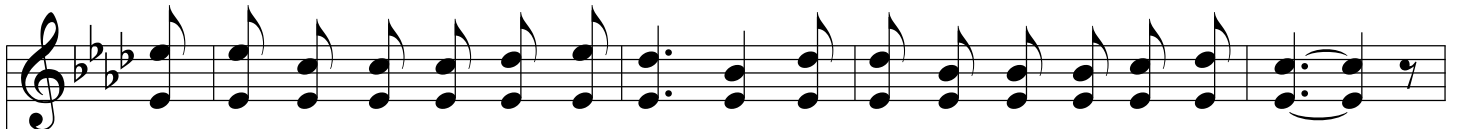
When thru all my pain and my an-guish, I heard a voice call - ing me home.
And yet I knew well it was Je - sus, So ten - der - ly call - ing me home.
I trem-bling - ly fled to my Sav - ior, Who fold - ed me safe - ly at home.
I'm hap - py, so hap - py in Je - sus, And shel - ter'd se - cure - ly at home.



Chorus



Home to His breast, His lov - ing breast, Home to His peace and rest;



No mat - ter how far you have wan-der'd, No mat - ter wher - ev - er you roam;



Jesus Is Calling You Home

pp Rall...

Je - sus in ten - der - est pit - y, Is lov - ing - ly call - ing you home.

The image shows a musical score for the hymn 'Jesus Is Calling You Home'. It consists of two staves: a treble clef staff for the melody and a bass clef staff for the accompaniment. The key signature is three flats (B-flat, E-flat, A-flat), and the time signature is 4/4. The melody begins with a half note G4, followed by quarter notes A4, B4, C5, B4, A4, G4, and a half note F4. The accompaniment starts with a half note G3, followed by quarter notes A3, B3, C4, B3, A3, G3, and a half note F3. The lyrics are written below the treble staff. The piece concludes with a double bar line.