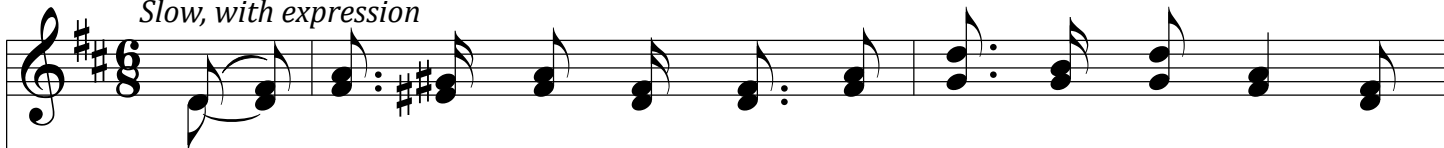


# Eternity's Night

D

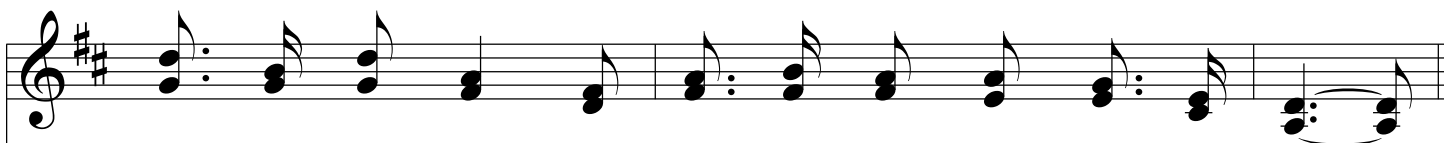
*Slow, with expression*



1. O sin - ner, re - mem - ber, tho' fair be life's day, There's  
2. On the edge of per - di - tion now blind - ly you tread, Its  
3. Oh, e - ter - ni - ty's dark - ness! its gloom doth af - fright, No  
4. Oh, e - ter - ni - ty's dark - ness now falls on the shore, The  
5. The Sav - ior is plead - ing, there's mer - cy to - day, A -



on - ly one step to the tomb; Your life, like a va - por, will  
tor - ments how fear - ful they seem; Ah, soon you will dwell with the  
star ev - er shines in the sky; No morn - ing shall dawn on the  
twi - light be - gins to ap - pear; Soon there will be mer - cy, sweet  
gain He in - vites you to come; O flee to His bos - om, and



soon pass a - way, Then com - eth e - ter - ni - ty's gloom.  
num - ber - less dead, Where Je - sus can nev - er re - deem.  
gloom of its night, There com - eth no "sweet by and by."  
mer - cy no more, But dark - ness and death draw - eth near.  
walk in His way, 'Twill lead to the heav - en - ly home.



## Chorus



To be lost in the night, in "e - ter - ni - ty's night," To  
(5th vs.)- To be saved from the night, from "e - ter - ni - ty's night," And to



# *Eternity's Night*

sink in de - spair and in woe! But such is your doom, if you  
walk 'mid the splen - dors a - bove! To dwell with the Lord, and a -

turn from the light, re - fus - ing God's mer - cy to know.  
bide in His light, En - joy - ing His mer - cy and love.