

The Still Small Voice

Con espress.



1. I heard a Voice, a "still small Voice," When life was new and skies were
 2. A - gain I heard that Heav'n - ly Voice When sor - row came, with all her
 3. And now that Voice is sweet - er far Than e'en the sweet - est mel - o -
 4. Ye souls that wan - der far from God, With heav - y hearts and wea - ry



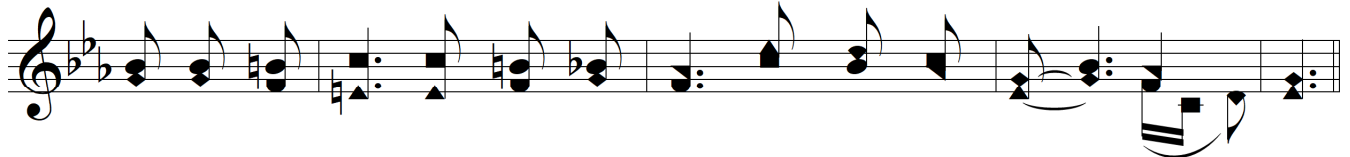
bright; It spoke to me of des - ti - ny, Of du - ty and of right.
 train; Dark shad - ows fell where light had been, And life was full of pain.
 dy; It tells me of my Fa - ther's love, It cheers and com - forts me;
 feet, Up - on the de - sert ways of sin, Where rain and tem - pest beat;—



Then oth - er voic - es filled my ear, And charmed my soul a - way:
 A - bove the tu - mult in my breast, I heard that plead - ing Voice;
 It whis - pers how my feet should go A - long this earth - ly road;
 That Heav'n - ly Voice is call - ing you, O lis - ten, while ye may!

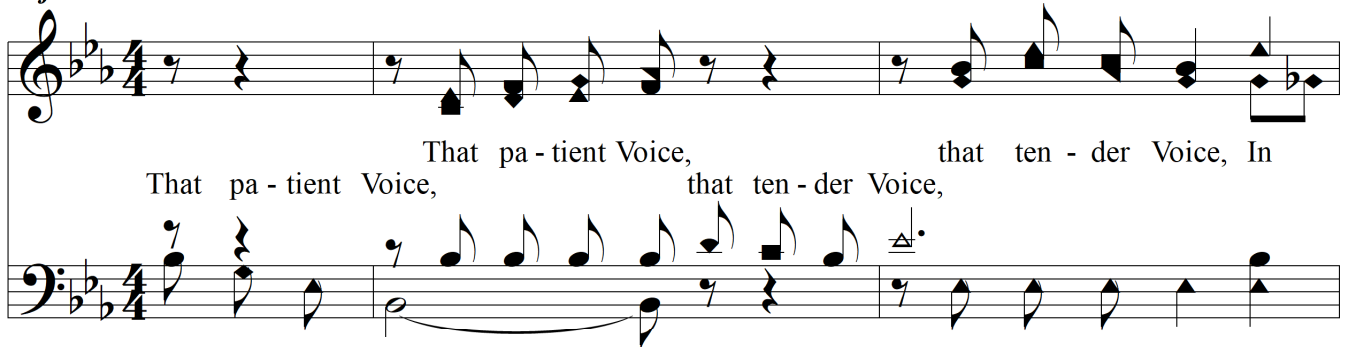
ad lib...

molto rit...



A - las for me! I failed to heed God's gen - tle voice that day.
 It spoke of par - don, peace and rest, And made my heart re - joice.
 It calls me on to ho - li - ness, To Heav - en, and to God.
 No long - er hard - en ye your hearts, But hark - en and o - bey.

Refrain



That pa - tient Voice, that ten - der Voice, In
 That pa - tient Voice, that ten - der Voice,

The Still Small Voice

ev - 'ry bos - om pleads; In ev - 'ry bos - om pleads; It is the Fa - ther's - ther's

rit...

Detailed description: This system contains the first two staves of the musical score. The top staff is in treble clef and the bottom staff is in bass clef. The key signature has two flats (B-flat and E-flat). The music features a vocal line with lyrics and a piano accompaniment. A 'rit...' marking is placed above the first staff. The lyrics are: 'ev - 'ry bos - om pleads; In ev - 'ry bos - om pleads; It is the Fa - ther's - ther's'.

voice of love, His voice of love, And blest is he that heeds. A - men.
And blest is he that heeds.

rit... ad lib...

Detailed description: This system contains the second two staves of the musical score. The top staff is in treble clef and the bottom staff is in bass clef. The key signature has two flats. The music continues with the vocal line and piano accompaniment. 'rit...' and 'ad lib...' markings are placed above the first staff. The lyrics are: 'voice of love, His voice of love, And blest is he that heeds. A - men. And blest is he that heeds.'.