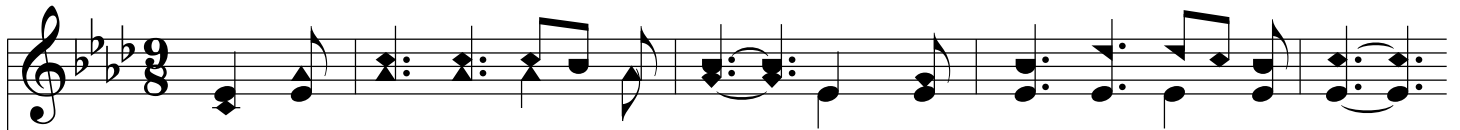
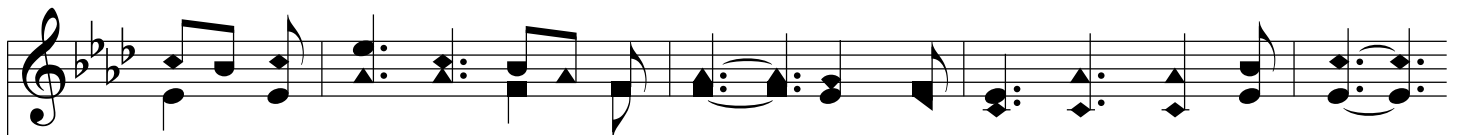
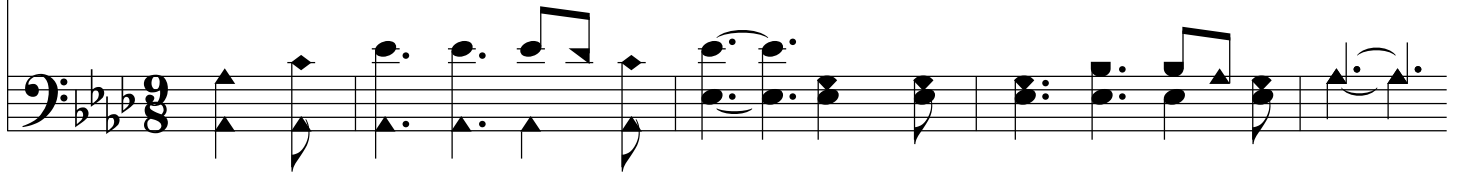


# The Fullness Of Blessing

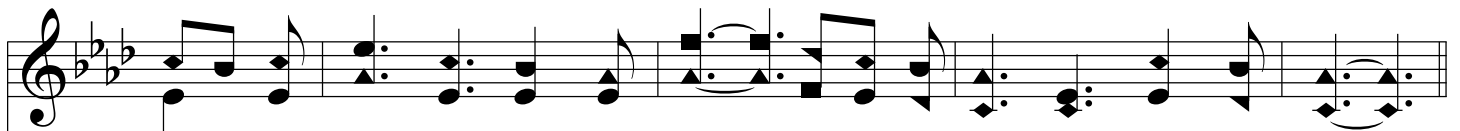
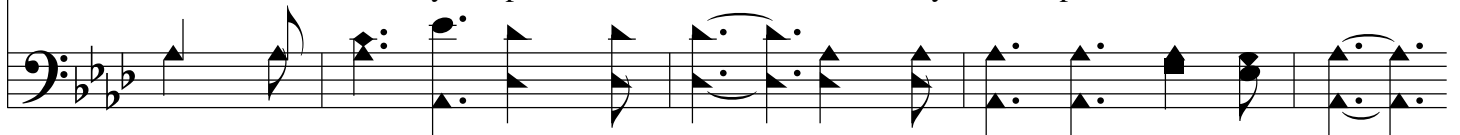
Ab/Eb - SOL



1. Ho - ly Spir - it, dwell with me, Make me ho - ly, like to Thee;  
2. Lov - ing Spir - it, come to me, Make me lov - ing, like to Thee;  
3. Might - y Spir - it, live in me, I would heav'n - ly - mind - ed be;  
4. Glo - rious Spir - it, fill Thou me! This poor heart I yield to Thee;



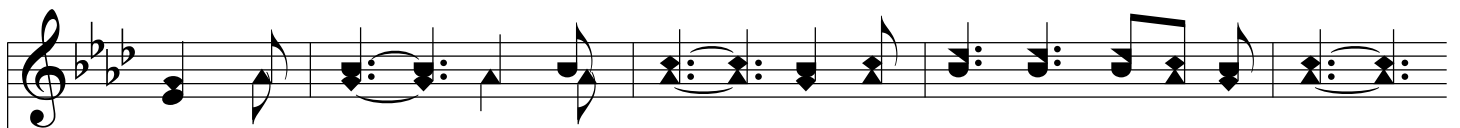
Bring Thou ev - 'ry tho't of mine In - to har - mo - ny with Thine;  
To its depths my be - ing stir, Print my Mas - ter's like - ness there;  
Let my heart its sov - 'reign own, Christ its cen - ter - Christ a - lone;  
Take me bod - y, spir - it, soul, Let Thy life per - vade the whole;



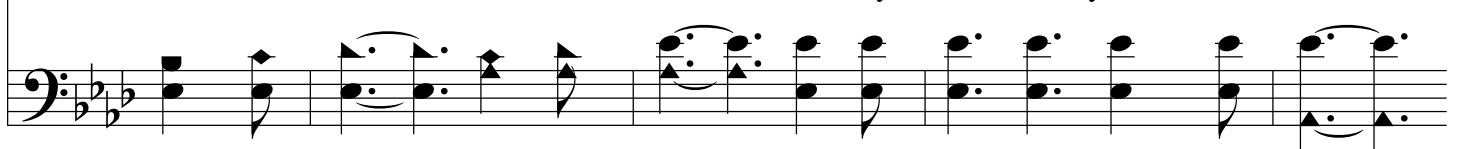
Bring Thou ev - 'ry tho't of mine In - to har - mo - ny with Thine.  
To its depths my be - ing stir, Print my Mas - ter's like - ness there.  
Let my heart its sov - 'reign own, Christ its cen - ter - Christ a - lone.  
Take me bod - y, spir - it, soul, Let Thy life per - vade the whole.



## Chorus



Fill Thou me! fill Thou me! All my heart I yield to Thee!



# *The Fullness Of Blessing*

With Thy ho - li - ness di - vine Fill this long - ing heart of mine!

The image shows a musical score for the hymn 'The Fullness Of Blessing'. It consists of two staves: a treble clef staff on top and a bass clef staff on the bottom. The key signature is three flats (B-flat, E-flat, A-flat), and the time signature is 4/4. The melody is written in the treble clef, and the bass line is in the bass clef. The lyrics are: 'With Thy ho - li - ness di - vine Fill this long - ing heart of mine!'. The music features a mix of eighth and quarter notes, with some phrases held over from the previous measure. The piece concludes with a double bar line.