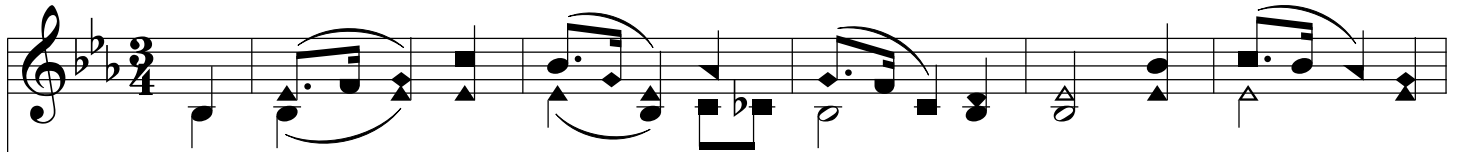
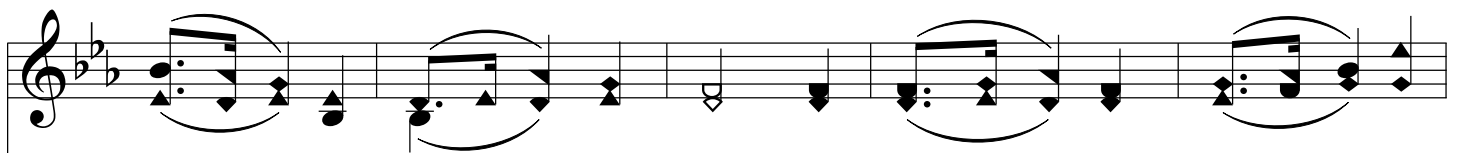


# Our Surest Stay

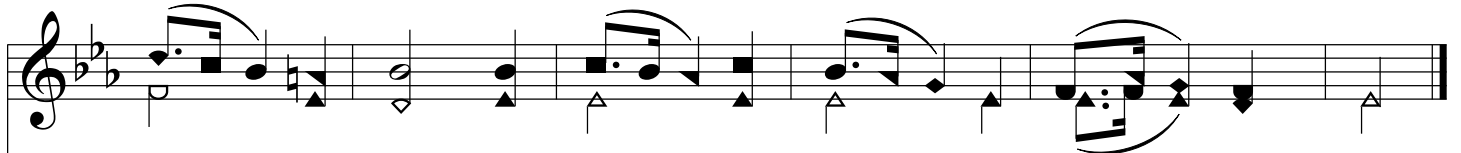
E $\flat$ /B $\flat$  - SOL



1. When soft - ly falls the twi - light hour, O'er moor and  
2. In sol - emn mid - night's si - lence deep, When Na - ture's  
3. And when with red'n - ing blush of morn The new - born  
4. When mid - day's burn - ing heat we feel, When dai - ly



moun - tain, field and flow'r, How sweet to leave a  
voice is hash'd in sleep, Then heav - y hearts with  
day be - gins to dawn, Then up - ward to the  
cares our hearts would steal, O, then to heav'n we



world of care, And lift to heav'n the voice of pray'r!  
grief op - press'd May find in pray'r the sweet - est rest.  
mer - cy - seat Let pray'r as - cend like in - cense sweet.  
look a - way, And find in pray'r our sur - est stay.

