

Don't Forget That Promise

E♭/B♭ - SOL

To my son, Y. M., wireless operator on the S. S. Mt. Evans. - Mrs. R. H. C.



1. When you left the home - stead in the hap - py long a - go, Moth - er's sun - ny
2. Day by day she's wait - ing for the let - ters from her boy, Pray - ing for your
3. Moth - er is the tru - est, sweet - est earth - ly friend of all, Your suc - cess is

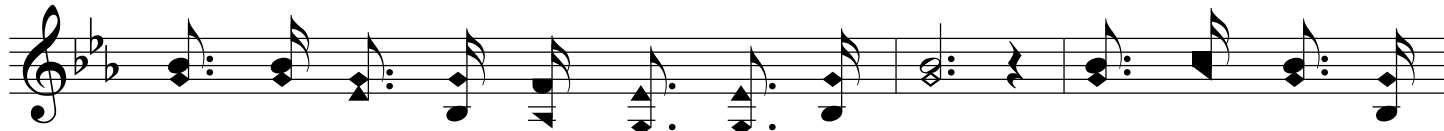


noon was turned to night; Yet her tears were hid - den, on - ly
wel - fare morn and night; Send a - long the let - ters which will
al - ways her de - light; Take a - way her long - ing, do not

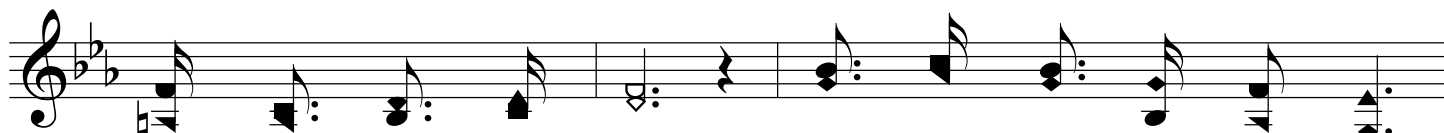


smiles she had to show, Just be - cause you prom - ised you would write.
fill her heart with joy, Don't for - get you prom - ised, you would write.
cause the tears to fall, Send a lit - tle let - ter ev - 'ry night.

Chorus



Don't for - get the prom - ise that you gave, Soon she may be



si - lent in the grave; Hold - ing none a - bove her,



show her that you love her, Don't for - get the prom - ise that you gave.