

Do You Love Jesus

C/E - MI



1. Do you love Je - sus? He hath re - deemed you; He up - on Cal - v'ry
2. Do you not know Him? Hark to the sto - ry; How to re - deem you,
3. Do you love Je - sus? Do you love Je - sus? Think how He left His

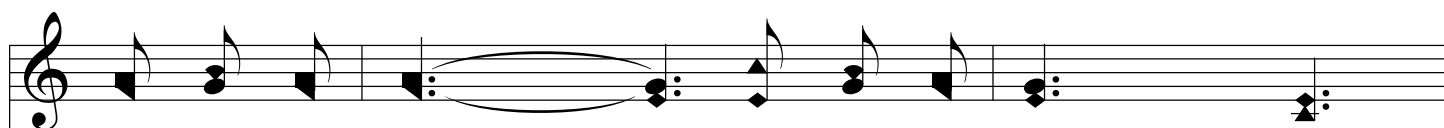
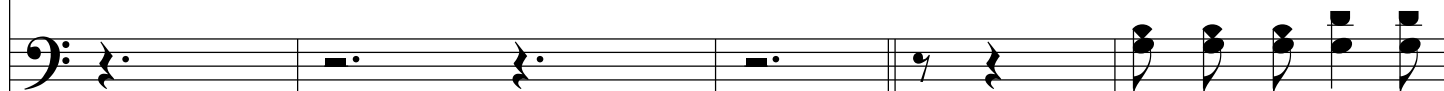


Suf - fered and Died. Will you ac - cept Him? How can you lin - ger?
Glad - ly He came; Left His bright heav - en, Slept in a man - ger,
Home in the sky; Lov - ing and toil - ing, Suf - fer - ing, dy - ing,

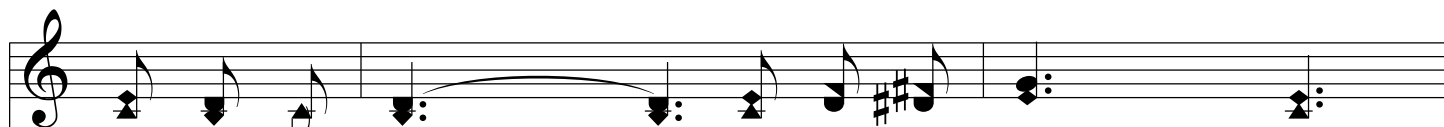
Chorus



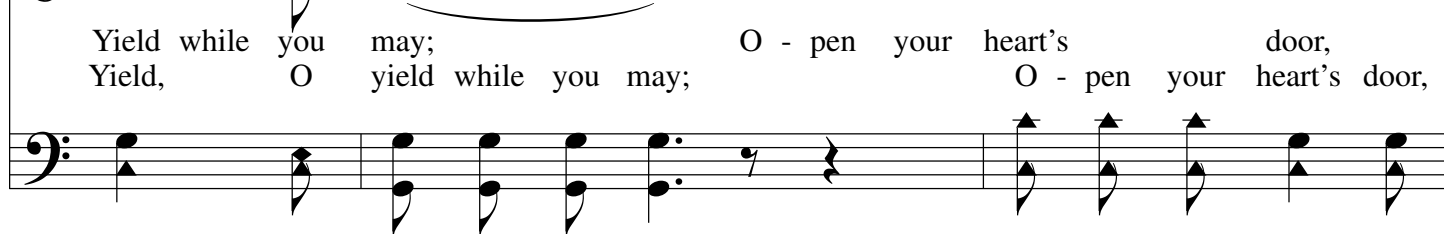
How can you slight Him? Once cru - ci - fied. Will you love Je - sus?
Sav - ior of sin - ners! Won - der - ful name! Will you love Je - sus?
Pay - ing your debt so You need not die.



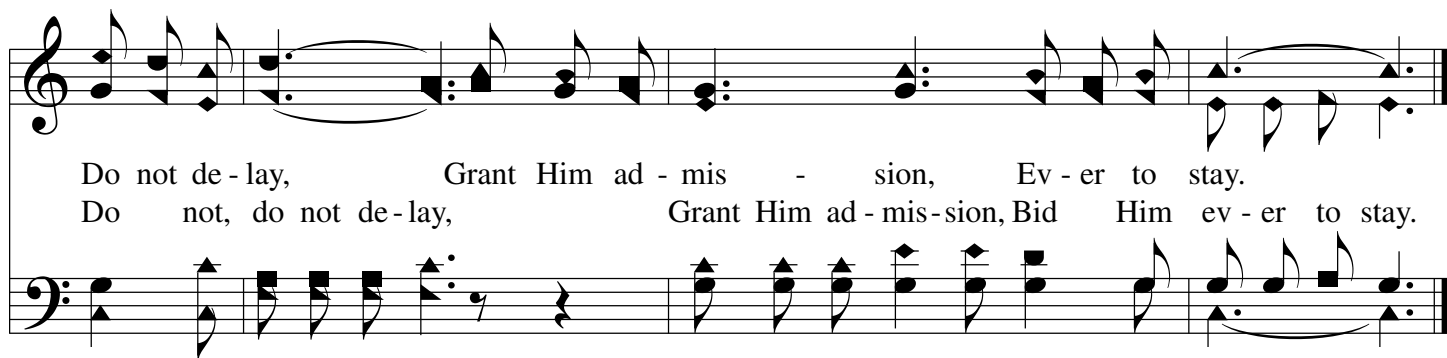
Love Him to - day? Slight not His mer - cy,
Will you love Him to - day? Slight not His mer - cy,



Yield while you may; O - pen your heart's door,
Yield, O yield while you may; O - pen your heart's door,



Do You Love Jesus



Do not de - lay, Grant Him ad - mis - sion, Ev - er to stay.
Do not, do not de - lay, Grant Him ad - mis - sion, Bid Him ev - er to stay.

The image shows a musical score for the hymn "Do You Love Jesus". It consists of two staves: a vocal line in the treble clef and a bass line in the bass clef. The vocal line begins with a treble clef and a key signature of one flat (B-flat). The melody is written in a simple, hymn-like style with various note values including quarter, eighth, and half notes, as well as rests. The lyrics are written below the vocal line, with hyphens indicating syllables that span across multiple notes. The bass line provides a harmonic accompaniment, primarily using chords and single notes. The piece concludes with a double bar line.