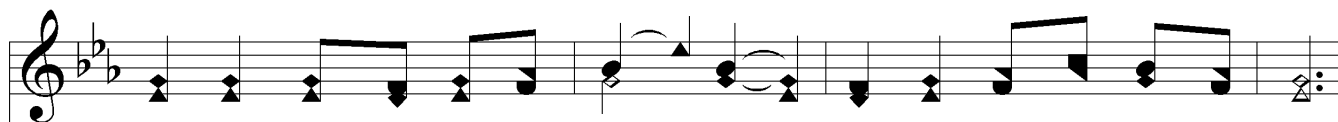
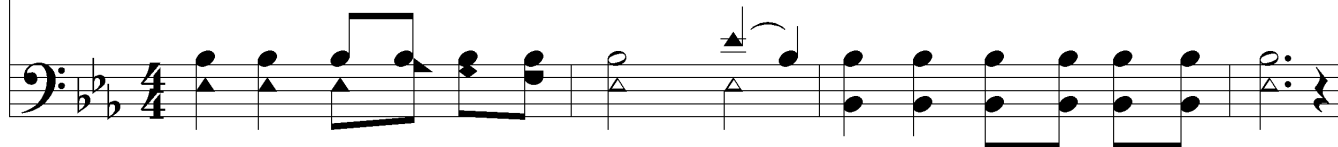


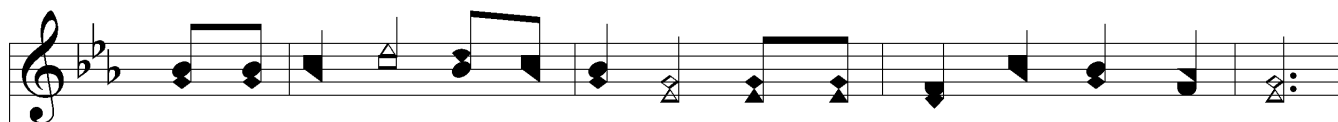
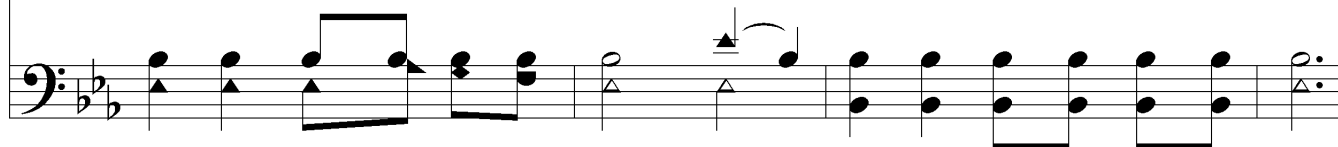
# SAVIOR, LIKE A SHEPHERD LEAD US



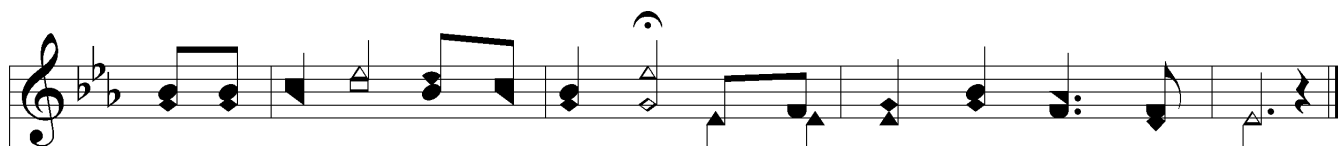
1. Sav - ior, like a shep-herd lead us: Much we need Thy ten-d'rest care;  
 2. We are Thine; do Thou be - friend us; Be the Guard-ian of our way;  
 3. Ear - ly let us seek Thy fa - vor, Ear - ly let us do Thy will;



In Thy pleas - ant pas-tures feed us, For our use Thy folds pre - pare:  
 Keep Thy flock, from sin de - fend us, Seek us when we go a - stray:  
 Bless - ed Lord and on - ly Sav - ior, With Thy love our bos - oms fill:



Bless - ed Je - sus, Bless - ed Je - sus, Thou hast bought us, Thine we are;  
 Bless - ed Je - sus, Bless - ed Je - sus, Hear, O hear us when we pray;  
 Bless - ed Je - sus, Bless - ed Je - sus, Thou hast loved us, love us still;



Bless-ed Je - sus, Bless - ed Je - sus, Thou hast bought us, Thine we are.  
 Bless-ed Je - sus, Bless - ed Je - sus, Hear, O hear us when we pray.  
 Bless-ed Je - sus, Bless - ed Je - sus, Thou hast loved us, love us still.

