

Jesus Is Our Shepherd

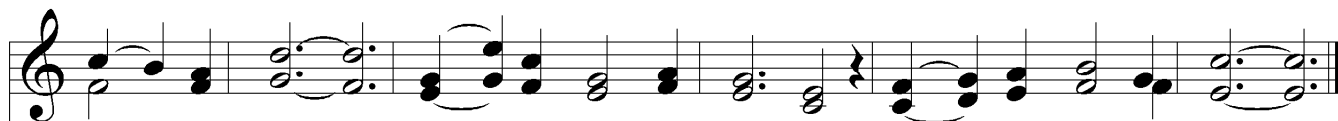
ELLWOOD 6s & 5s D.



1. Je - sus is our Shep-herd, Wip - ing ev - 'ry tear; Fold - ed in His
2. Je - sus is our Shep-herd: Well we know His voice, How its gen - tlest
3. Je - sus is our Shep-herd, For the sheep He bled; Ev - 'ry lamb is
4. Je - sus is our Shep-herd; Guard - ed by His arm, Tho' the wolves may



bos - om, What have we to fear? On - ly let us fol - low Whith - er
whis - per Makes our heart re - joice; E - ven when He chid - eth, Ten - der
sprin - kled With the blood He shed; Then on each He set - teth His own
ra - ven, None can do us harm; When we tread death's val - ley, Dark with



He doth lead, To the thirst - y de - sert, Or the dew - y mead.
is His tone: None but He shall guide us; We are His a - lone.
se - cret sign, - "They that have My Spir - it, These," saith He, "are Mine."
fear - ful gloom. We will fear no e - vil, Vic - tors o'er the tomb.

