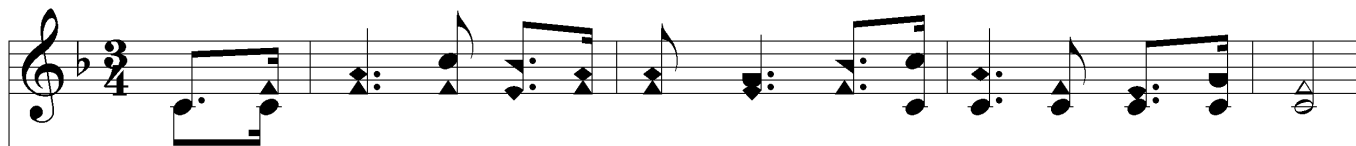


# O Be Watchful



1. Hast thou trimm'd thy lamp, my broth - er, Is it burn - ing clear and bright?  
2. Is it shin - ing in the dark - ness Where the wea - ry wand - 'ers roam?  
3. For the com - ing of the Bride - groom, And the mar - riage feast pre - pare;



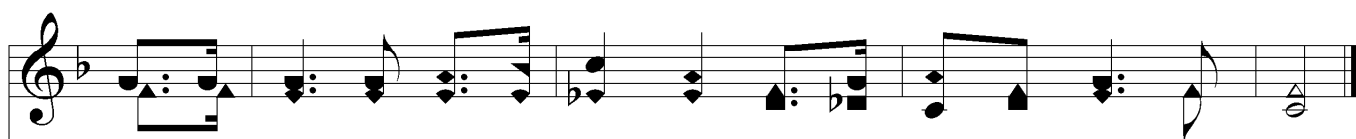
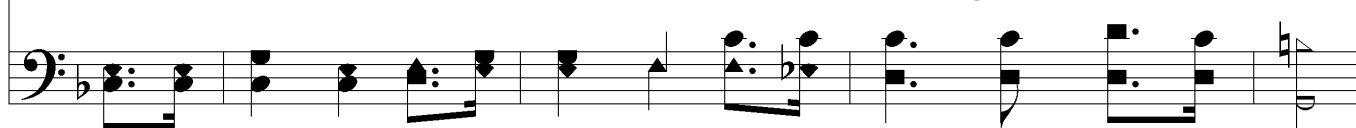
Is it shin - ing so that oth - ers, May be - hold its stead - y light?  
Will its rays, their steps il - lum - ing, Help to guide them safe - ly home?  
Let thy lamp be trimm'd and burn - ing When He bids thee en - ter there.



## Chorus



O be watch - ful, ev - er watch - ful, For the Bride - groom draw - eth near;



And be sure thy lamp is burn - ing, When the sum - mons thou shalt hear.

