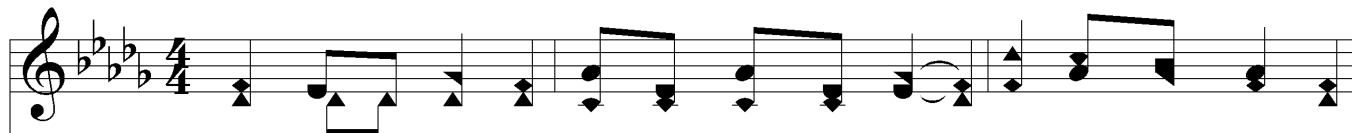
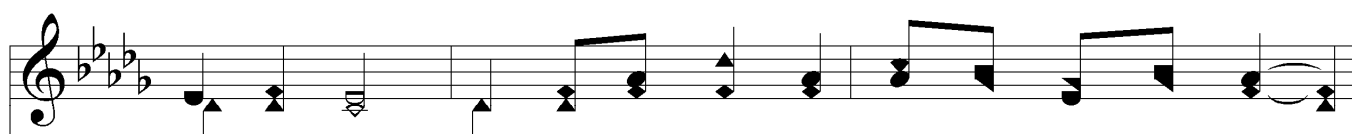


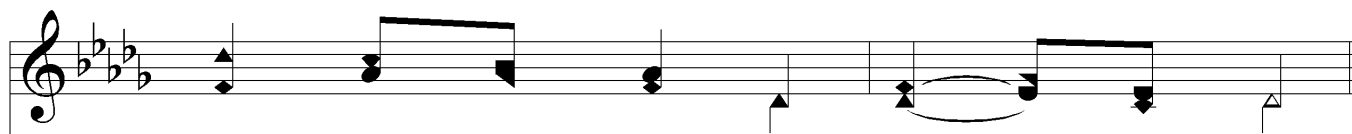
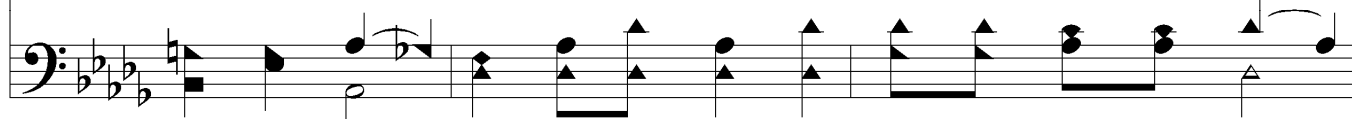
Lead Thou Me



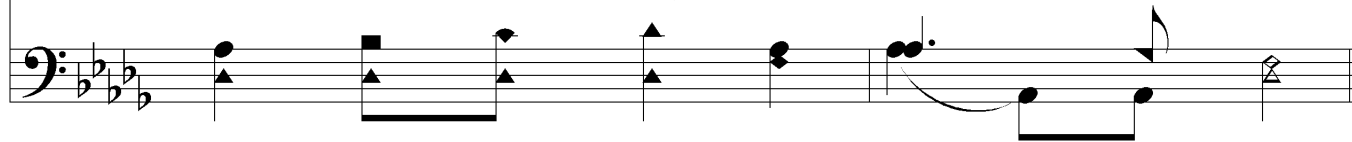
1. Je - sus, my Sav - ior, thru the chang - ing ways Of life's brief jour - ney:
 2. Fal - t'ring my steps at times; be - set by fear I, stum - bling, fall, but
 3. Thou art my hope, in Thee do I con - fide; My - self I trust not;
 4. Je - sus my Sav - ior, Thine own choice is best; Go Thou be - fore me,



lead Thou me. Thee will I trust, thru bright - est, dark - est days,
 lead Thou me. Fool - ish I am, for - get - ful Thou art near;
 lead Thou me. Thou art my help, do Thou with me a - bide;
 lead Thou me. Short is life's long - est road: then comes Thy rest,



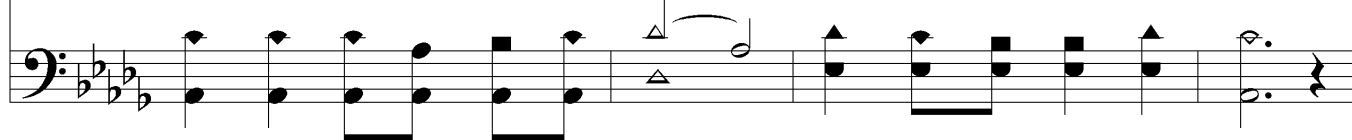
Thy love pro - tect - ing: lead Thou me.
 For - give my sin, yet lead Thou me.
 Thou canst not fail, still lead Thou me.
 Where Thou dost will, e'er lead Thou me.



Chorus



Lead Thou me, most bless - ed Lord; Lead where Thy love doth say.



Lead Thou Me

Lead Thou me, most bless - ed Lord: I would not choose my way.

The image shows a musical score for the hymn "Lead Thou Me". It consists of two staves: a treble clef staff on top and a bass clef staff on the bottom. The key signature is three flats (B-flat, E-flat, A-flat), and the time signature is 4/4. The melody is written in the treble clef, and the bass line is in the bass clef. The lyrics are written below the treble staff. The score ends with a double bar line and repeat dots.