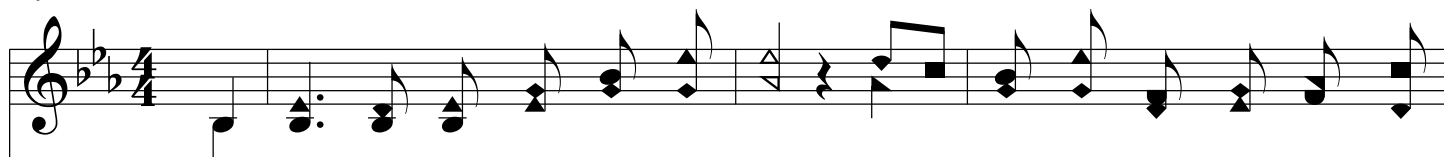
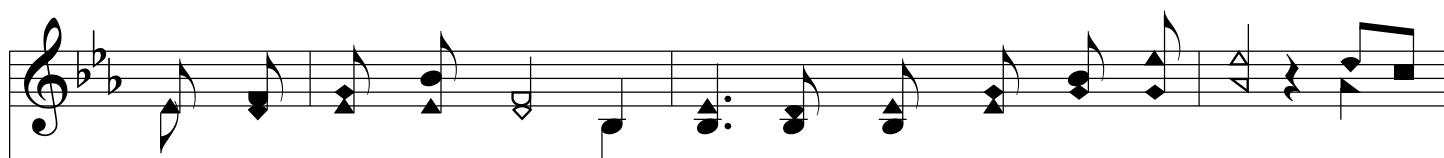


We Lay Us Down To Sleep

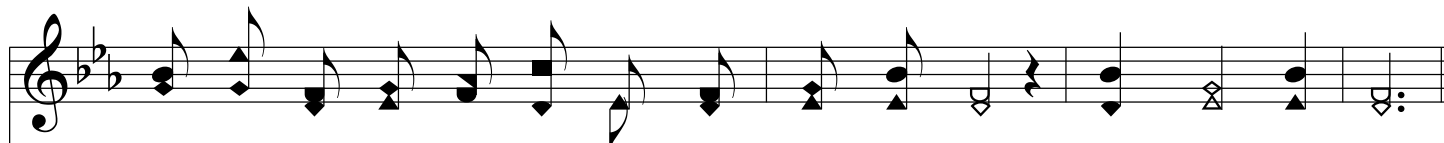
E♭/B♭ - SOL



1. We lay us calm - ly down to sleep When friend - ly night is come, and
2. As sinks the sun in west - ern skies When day is done, and twi - light
3. Why vex our souls with wear - ing care? Why shun the grave, for ach - ing
4. Some oth - er hand the task can take, If so it seem - eth best, - the



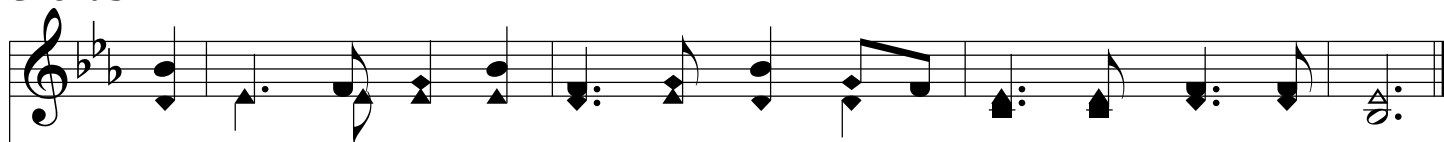
leave To God the rest; Wheth - er we wake to smile or weep, Or
dim Comes si - lent on, So fades the world's most lur - ing prize On
head So cool and low? Have we found life so pass - ing fair, So
task By us be - gun; No work for which we need to wake In



wake no more on time's fair shore, He know - eth best, He know - eth best.
eyes that close in deep re - pose Till wakes the dawn, Till wakes the dawn.
grand to be, so sweet that we Should dread to go? Should dread to go?
joy or grief, for life so brief, Be - neath the sun, Be - neath the sun.



Chorus



O Fa - ther, us in safe - ty keep! We lay us down to sleep.

