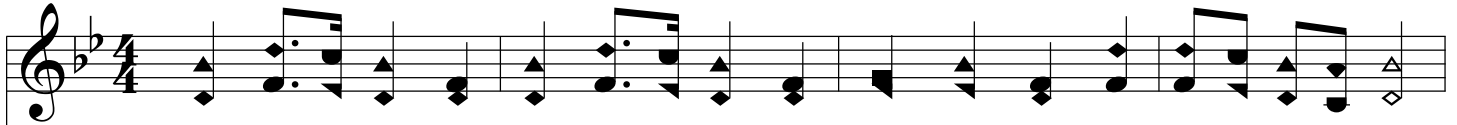
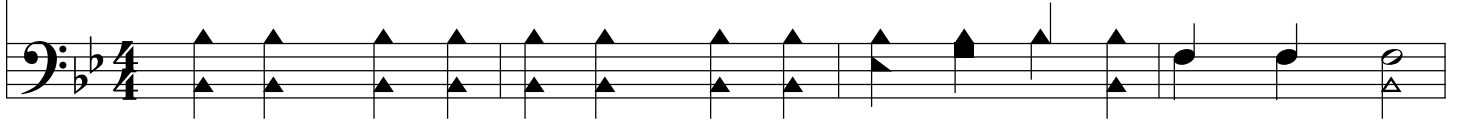


# Be Near Us

B $\flat$ /B $\flat$  - DO



1. God of our sal - ta - tion, hear us; Bless, O bless us, ere we go;  
2. May we live in view of heav - en, Where we hope to see Thy face;  
3. As our steps are draw - ing near - er To the place we call our home,



When we join the world, be near us, Lest we cold and care - less grow.  
Let Thy Spir - it's light be giv - en, All our hid - den paths to trace.  
May our view of heav'n grow clear - er, Hope more bright of joys to come.

