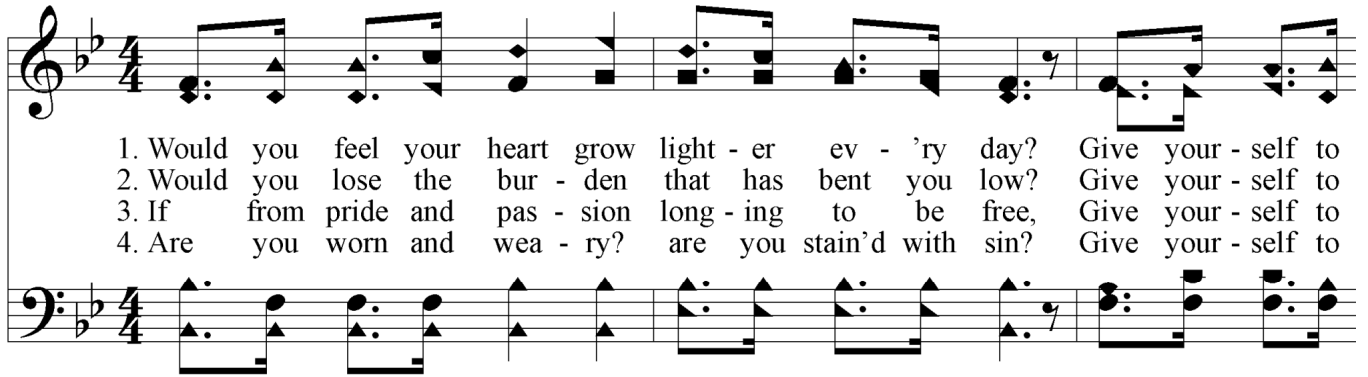
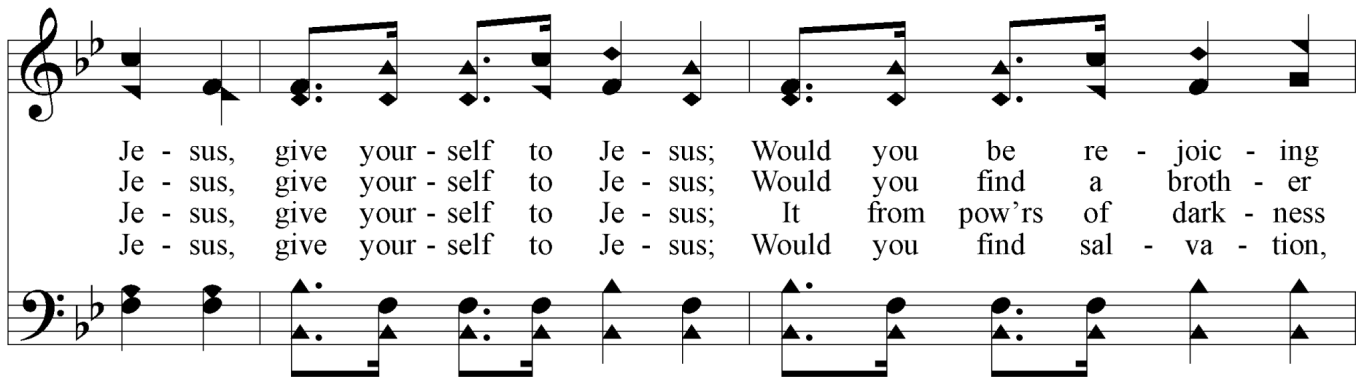


# Give Yourself to Jesus



1. Would you feel your heart grow light - er ev - 'ry day? Give your - self to  
2. Would you lose the bur - den that has bent you low? Give your - self to  
3. If from pride and pas - sion long - ing to be free, Give your - self to  
4. Are you worn and wea - ry? are you stain'd with sin? Give your - self to

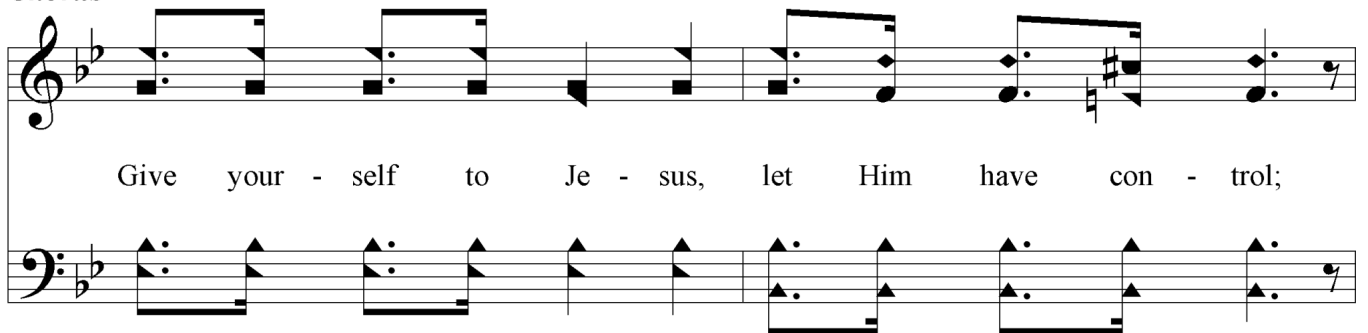


Je - sus, give your - self to Je - sus; Would you be re - joic - ing  
Je - sus, give your - self to Je - sus; Would you find a broth - er  
Je - sus, give your - self to Je - sus; It from pow'rs of dark - ness  
Je - sus, give your - self to Je - sus; Would you find sal - va - tion,



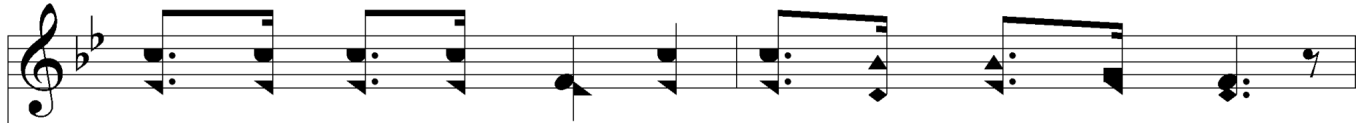
all a - long the way? Give your - self to Je - sus, to Je - sus.  
who will share your woe? Give your - self to Je - sus, to Je - sus.  
res - cued you would be, Give your - self to Je - sus, to Je - sus.  
would you par - don win? Give your - self to Je - sus, to Je - sus.

## Chorus



Give your - self to Je - sus, let Him have con - trol;

# *Give Yourself to Jesus*



He will not de - ceive you, safe will be your soul;



He will pu - ri - fy you, guide and keep you whole; Give your - self to Je - sus, to Je - sus.