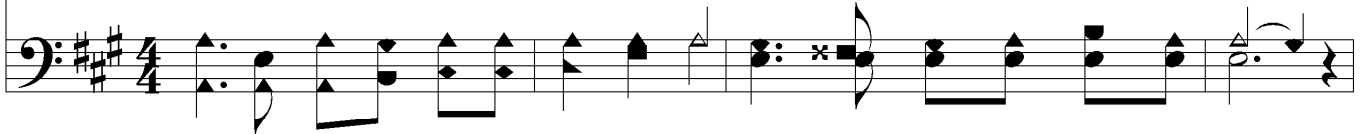


All The Way My Savior Leadeth Me

ALL THE WAY



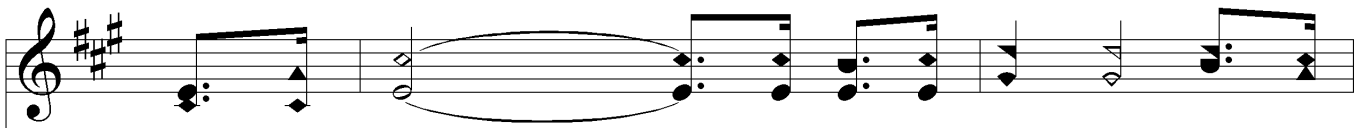
1. All the way my Sav-ior lead-eth me; Shep-herd, Friend and Guide is He;
2. All the way my Sav-ior lead-eth me, Nev-er can I doubt-ful be,
3. All the way my Sav-ior lead-eth me, And com-mun-ion sweet have we;
4. All the way my Sav-ior lead-eth me, And, thru-out e-ter-ni-ty,



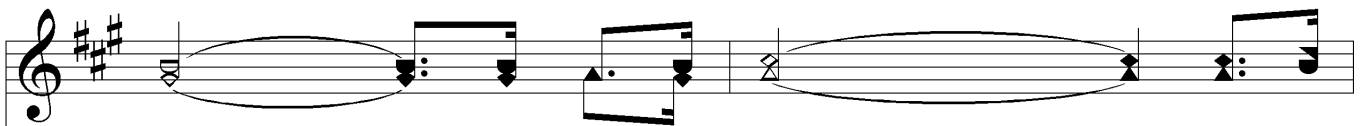
And tho' clouds of dark-ness o'er me roll, There is joy and sun-light in my soul.
For He sweet-ly whis-pers in my ear, "Child, be pa-tient, I, thy Lord, am near!"
Grace He gives me, and such peace af-fords, That I feel and know I'm all the Lord's.
I will praise Him for the love and pow'r That sus-tains and saves me ev-'ry hour.



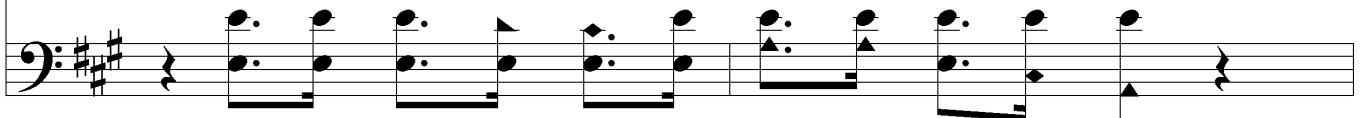
Chorus



Where He leads me I will fol-low, I will
Where He leads me,



fol-I will fol-low, all the way; Where He
I will fol-low, I will fol-low all the way;



All The Way My Savior Leadeth Me

leads me, I will fol - low, I will fol - low all the way.
Where He leads me,

The image shows a musical score for the hymn "All The Way My Savior Leadeth Me". It consists of two staves: a treble clef staff on top and a bass clef staff on the bottom. The key signature is two sharps (F# and C#). The melody is written in the treble staff, starting with a whole note chord (F#4, C#5) followed by a series of eighth and quarter notes. The lyrics are placed below the treble staff, with "leads me, I will fol - low, I will fol - low all the way." on the first line and "Where He leads me," on the second line. The bass staff provides a harmonic accompaniment with chords and moving lines.