

Who Is On The Lord's Side



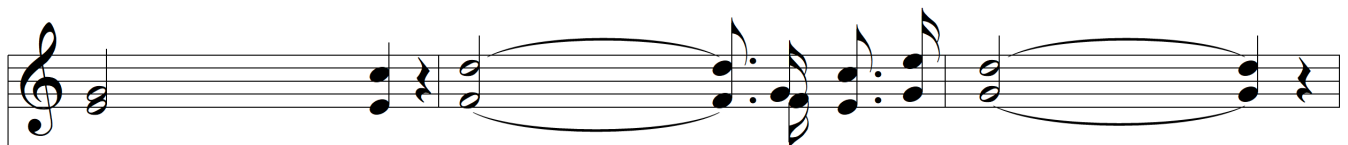
1. Who is on the Lord's side? Who will serve the King? Who will be His help - er,
 2. Fierce may be the con - flict, Strong may - be the foe; But the King's own ar - my
 3. Cho - sen to be sol - diers In an al - ien land, Cho-sen, called, and faith-ful,



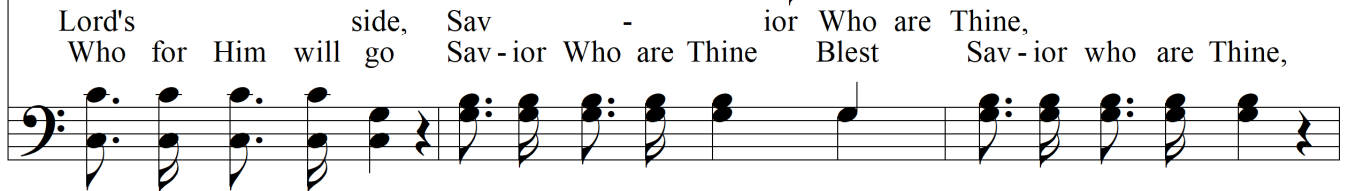
Oth - er souls to bring? Who will leave the world's side? Who will face the foe?
 None can o - ver - throw; Round His stand - ard rang - ing, Vic - t'ry is se - cure;
 For our Cap - tain's band; In His ser - vice roy - al, Let as not grow cold;



Who is oh the Lord's side? Who for Him will go? Who is on the
 For His truth un - chang - ing Makes the tri - umph sure. Who is on the Lord's side,
 Let us be right loy - al, No - ble, true, and bold. Who is on the Lord's side,



Lord's side, Sav - ior Who are Thine,
 Who for Him will go Sav - ior Who are Thine Blest Sav - ior who are Thine,



Who Is On The Lord's Side

The image shows a musical score for the hymn "Who Is On The Lord's Side". It consists of two systems of music, each with a vocal line and a piano accompaniment line. The first system has two lines of lyrics: "We are on the Lord's side, Sav - ior we are Thine, Yes" and "We are on the Lord's side, Sav - ior we are Thine, Yes". The second system has two lines of lyrics: "Sav - ior we are Thine." and "we are on the Lord's side, Sav - ior we are Thine." The piano accompaniment features a steady bass line with chords in the right hand.

We are on the Lord's side, Sav - ior we are Thine, Yes
We are on the Lord's side, Sav - ior we are Thine, Yes

Sav - ior we are Thine.
we are on the Lord's side, Sav - ior we are Thine.