

Shall I Turn Back?

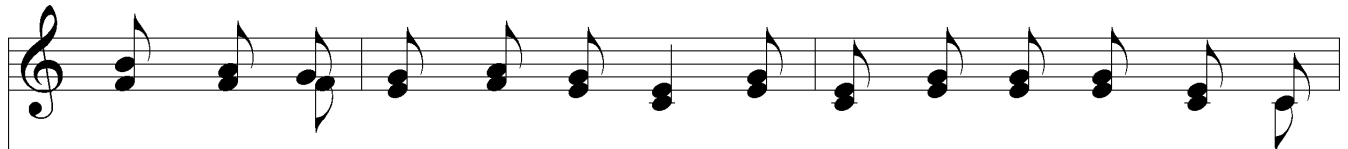
Psalm 23



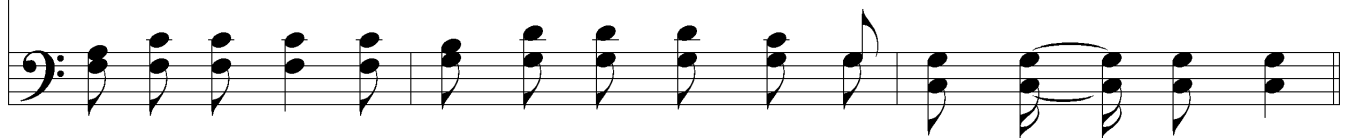
1. The Lord is my Shep-herd, no want shall I know; I feed in green
2. Thru the val-ley and shad-ow of death tho' I stray, Since Thou art my
3. In the midst of af-flic-tion, my ta-ble is spread With bless-ings un
4. Let good-ness and mer-cy, my boun-ti-ful God, Still fol-low my



pas-tures, safe fold-ed I rest: He lead-eth my soul where the
Guard-ian, no e-vil I fear, Thy rod shall de-fend me, Thy
num-bered, my cup run-neth o'er; With per-fume and oil Thou an-
steps till I meet Thee a-bove, I seek-by the path which my



still wa-ters flow, Re-stores me when wan-d'ring, re-deems when op-pressed.
staff be my stay; No harm can be-fall, with my Com-fort-er near.
oint-est my head; O what shall I ask of Thy prov-i-dence more?
fore-fa-thers trod Thru the land of their so-journ, Thy King-dom of love.



Chorus



And shall I turn back in-to the world? Oh, no! not I! not I!



Shall I Turn Back?

And shall I turn back in - to the world? No, no, not, I!

The image shows a musical score for the hymn 'Shall I Turn Back?'. It consists of two staves: a treble clef staff on top and a bass clef staff on the bottom. The treble staff contains a melody with a fermata over the first measure and a dynamic accent (>) over the eighth measure. The bass staff contains a bass line with a dynamic accent (>) under the eighth measure. The lyrics are written below the treble staff, with a hyphen under 'in' indicating a long note. The piece ends with a double bar line.