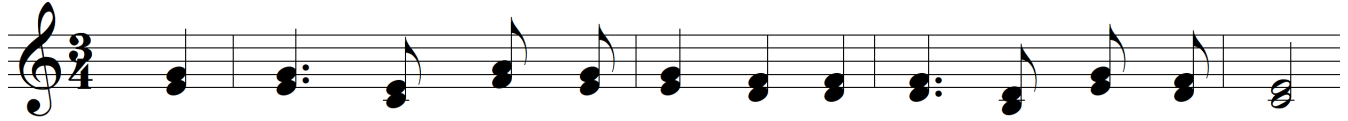
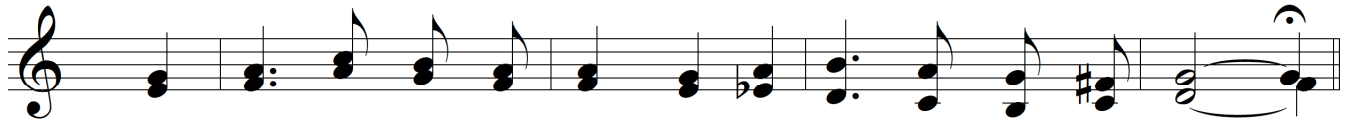


O Heart Bowed Down With Sorrow



1. O heart bowed down with sor - row! O eyes that long for sight!
2. Di - vin - est con - so - la - tion Doth Christ the Heal - er give;
3. His peace is like a riv - er, His love is like a song;

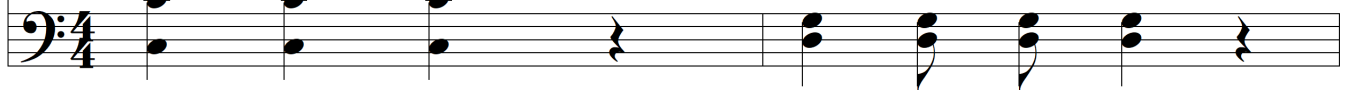


There's glad - ness in be - liev - ing; In Je - sus there is light.
Art thou in con - dem - na - tion? Be - lieve, re - pent and live.
His yoke's a bur - den nev - er, 'Tis eas - y all day long.

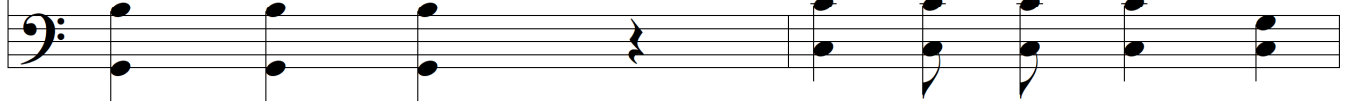
Chorus



Come un - to Me, all
Come, O, come, come un - to Me,



ye that la - bor,
Come, O, come, all ye that la - bor,



and are heav - y la - den, and
Come, O, come, are heav - y la - den souls,



O Heart Bowed Down With Sorrow

p

I will give you rest, Take My yoke up -
I will give you rest, give you rest,

I will give you rest. Come, O, come,

Detailed description: This system contains the first two staves of music. The top staff is in treble clef with a key signature of one sharp (F#) and a 2/8 time signature. It begins with a half note chord (F#4, C5) and continues with a melody of quarter notes: F#4, G4, A4, B4, C5, B4, A4, G4, F#4. A dynamic marking of *p* is placed above the first measure. The bottom staff is in bass clef and provides a harmonic accompaniment with chords: F#4-C5, G4-A4, B4-C5, B4-A4, G4-F#4, G4-A4, B4-C5, B4-A4, G4-F#4.

on you, and learn of Me; for
Come, take My yoke, Come, O, come, come, learn of Me;

Detailed description: This system contains the next two staves of music. The top staff continues the melody from the first system: F#4, G4, A4, B4, C5, B4, A4, G4, F#4, G4, A4, B4, C5, B4, A4, G4, F#4. The bottom staff provides a harmonic accompaniment with chords: F#4-C5, G4-A4, B4-C5, B4-A4, G4-F#4, G4-A4, B4-C5, B4-A4, G4-F#4, G4-A4, B4-C5, B4-A4, G4-F#4, G4-A4, B4-C5, B4-A4, G4-F#4.

I am meek and low - ly in heart:
I am meek and low - ly in heart:

Detailed description: This system contains the next two staves of music. The top staff continues the melody: F#4, G4, A4, B4, C5, B4, A4, G4, F#4, G4, A4, B4, C5, B4, A4, G4, F#4. The bottom staff provides a harmonic accompaniment with chords: F#4-C5, G4-A4, B4-C5, B4-A4, G4-F#4, G4-A4, B4-C5, B4-A4, G4-F#4, G4-A4, B4-C5, B4-A4, G4-F#4, G4-A4, B4-C5, B4-A4, G4-F#4.

Rit...

and ye shall find rest un - to your souls.

Detailed description: This system contains the final two staves of music. The top staff continues the melody: F#4, G4, A4, B4, C5, B4, A4, G4, F#4, G4, A4, B4, C5, B4, A4, G4, F#4. A dynamic marking of *Rit...* is placed above the first measure. The bottom staff provides a harmonic accompaniment with chords: F#4-C5, G4-A4, B4-C5, B4-A4, G4-F#4, G4-A4, B4-C5, B4-A4, G4-F#4, G4-A4, B4-C5, B4-A4, G4-F#4, G4-A4, B4-C5, B4-A4, G4-F#4.