

# Lend A Hand



1. In this world where sin is so ap - pal - ling, By the way - side souls are  
 2. While the pre - cious hours so swift are fly - ing, While the souls of men in  
 3. Hear the voice of Je - sus soft - ly say - ing: If ye love me, go, the  
 4. Think what joy when on the gold - en land - ing, When be - side our bless - ed



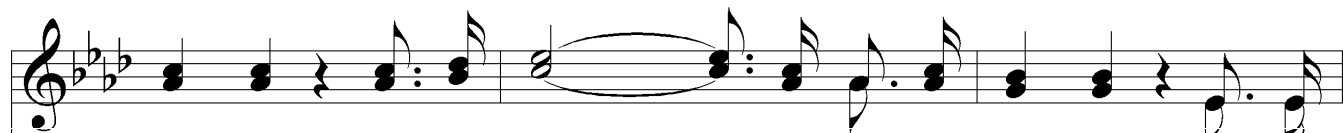
dai - ly fall - ing For the help that you can give they're call - ing;  
 sin are dy - ing, Do not say there is no use in try - ing;  
 cost not weigh - ing, True dis - ci - ples be, my word o - bey - ing;  
 Lord we're stand - ing, Safe at home with all the ran - somed band - ing;



## Chorus



Lend a hand, a help - ing hand. Lend a hand the wrongs to  
 Lend a hand



right - en, Lend a hand the load to light - en; Lend a  
 Lend a hand



# *Lend A Hand*

hand the world to bright-en, Lend a hand, a help-ing hand.  
Lend a hand,

The image shows a musical score for the hymn "Lend A Hand". It consists of two staves: a treble clef staff on top and a bass clef staff on the bottom. The key signature has three flats (B-flat, E-flat, A-flat), and the time signature is 4/4. The melody is written in the treble clef, and the bass line is in the bass clef. The lyrics are placed between the two staves, with "hand" and "Lend a hand," on the first line, and "the world to bright-en, Lend a hand, a help-ing hand." on the second line. The music ends with a double bar line.