

Where Is Thy Bethel?

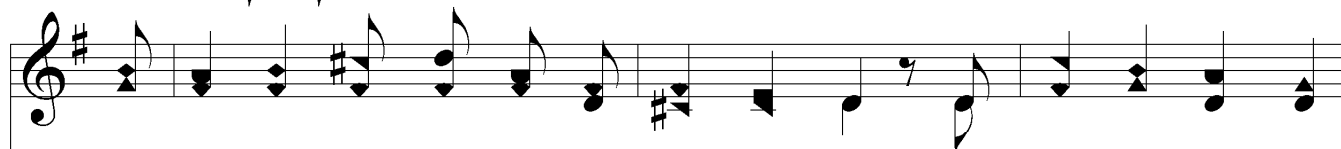
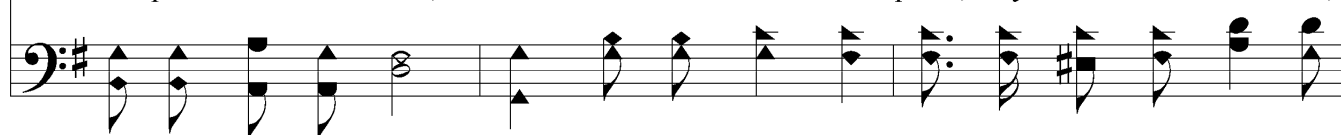
MORSE P. M.



1. Where is thy Beth-el? where the gate of heav - en? Where heav'n it - self doth
2. 'Tis there where Je - sus ev - er - more be - stow - eth His peace un - speak - a -
3. Then cease from i - dle sor - row, cease thy griev - ing, Thou hast e - nough, - this
4. So, as of old, the bless - ed Mas - ter go - eth, Thru bolt - ed doors, dis -



o - pen o'er thy head; Where, as in Ja - cob's heart, from God's Word giv - en,
ble up - on thy soul, Where from His wounds a - new there ev - er flow - eth
cor - dial left to thee, - Thou hast e - nough, canst thou this vain world leav - ing,
ci - ples' hearts to cheer, Yet there's an - oth - er place, my soul well know - eth,



The dew of heav'n in - to thy heart is shed. Where is thy Beth - el,
The on - ly balm that makes the sin - sick whole; The faith - ful Lord de -
The Mas - ter's com - ing in thy clos - et see! In - to thy cham - ber
Tho' it be small, that is to Him more dear; Thrice hap - py Chris - tian!



Chris - tian, tell me where? Thou know'st full well, - thy cham - ber, it is there!
lights to see thee there, And hastes to meet thee at thine hour of prayer.
comes the Lord of all, And "Peace be with thee," un - to thee doth call.
thou too know'st it well, Thy heart's the place where Christ doth love to dwell.

