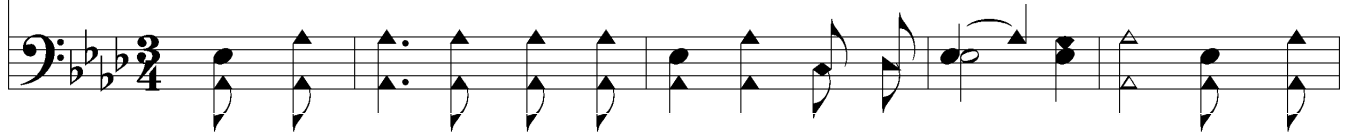


# When The Shadows Flee



1. Smil - ing skies will bend a - bove us, When the shad - ows flee; Hearts now  
2. Fet - ters nev - er - more will bind us, When the shad - ows flee; This dark  
3. We shall view our home su - per - nal, When the shad - ows flee; We shall



cold a - gain will love us, When the shad - ows flee; We shall lose our care and  
vale will be be - hind us, When the shad - ows flee; There will be no tem - pest  
meet our King e - ter - nal, When the shad - ows flee; There, where death will reach us



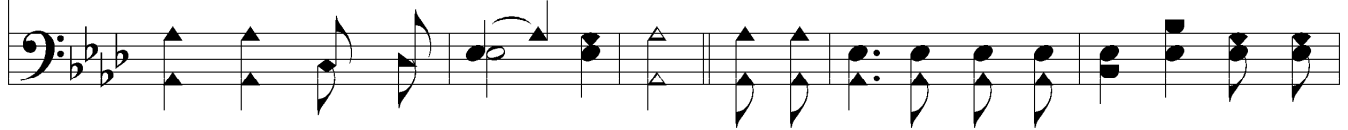
sor - row, Trou - ble nev - er - more to - mor - row, On that bless - ed, peace - ful  
sweep - ing, - In our lov - ing Fa - ther's keep - ing We shall wake, where none are  
nev - er, There, where naught our hearts shall sev - er, We shall dwell with Christ for -



## Chorus



mor - row, When the shad - ows flee.  
weep - ing, When the shad - ows flee. With e - ter - nal day be - fore us, And our  
ev - er, When the shad - ows flee.



# *When The Shadows Flee*

The image shows a musical score for the hymn 'When The Shadows Flee'. It consists of two staves: a treble clef staff at the top and a bass clef staff at the bottom. The key signature is three flats (B-flat, E-flat, A-flat), and the time signature is 4/4. The melody is written in the treble staff, and the bass line is in the bass staff. The lyrics are written below the treble staff. The piece concludes with a 'Rit...' (ritardando) marking above the final notes.

Sav - ior watch - ing o'er us, We shall join the end - less cho - rus, When the shad - ows flee.