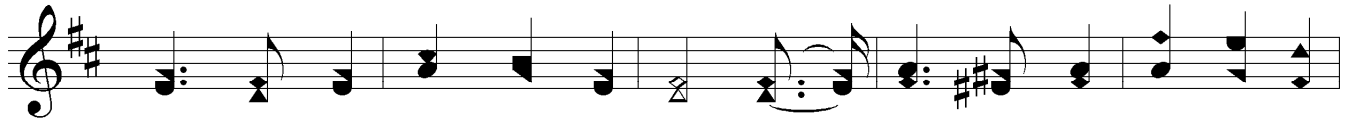


We Silently Slumber At Last



1. This life is a fan - ci - ful stage of com - mo - tion, A
 2. From day un - to day, souls grown wea - ry with plead - ing, Have
 3. Then why do we scorn - ful - ly jos - tle each oth - er, Or
 4. Oh, then, let us give from love's o - cean of sweet - ness, For

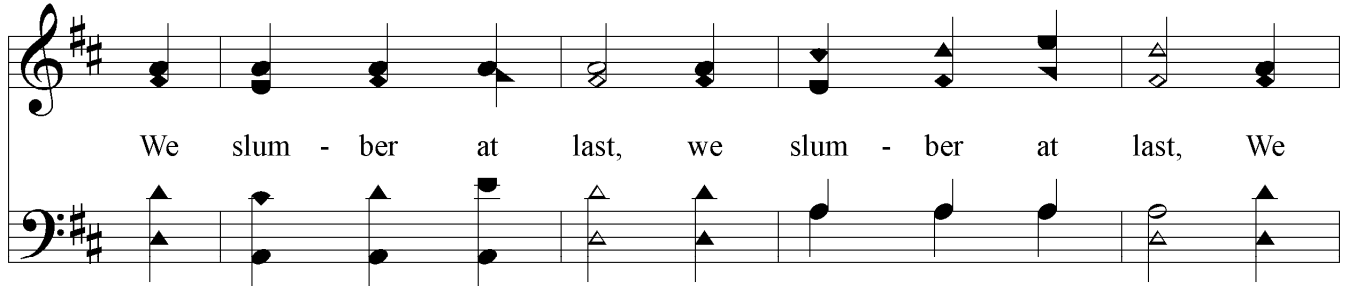


dream that is fad - ed and past; A voy - age soon made o'er a
 mourned for the hours that are past, But the poor wea - ry heart, ev - er
 with - hold love's en - d'aring re - past, When the peo - ple we meet be they
 get - ting all wrongs of the past; Such gems as shall bring to us

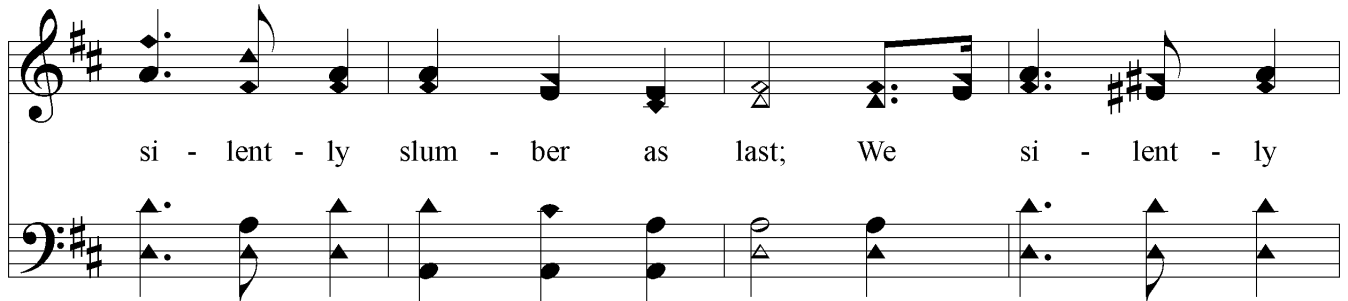


storm trou - bled o - cean, Then we si - lent - ly slum - ber at last.
 weak from its bleed - ing, We shall si - lent - ly slum - ber at last.
 stran - ger or broth - er, We shall si - lent - ly slum - ber at last.
 heav - en's com - plete - ness We shall si - lent - ly slum - ber at last.

Chorus



We slum - ber at last, we slum - ber at last, We



si - lent - ly slum - ber as last; We si - lent - ly

We Silently Slumber At Last

slum - ber at last,
Slum - ber at last,
Slum - ber at last.

The image shows a musical score for the hymn "We Silently Slumber At Last". It consists of two staves: a treble clef staff on top and a bass clef staff on the bottom. The key signature is one sharp (F#), and the time signature is 4/4. The melody is written in the treble clef, and the bass line is in the bass clef. The lyrics are written below the treble staff. The first line of lyrics is "slum - ber at last,". The second line is "Slum - ber at last,". The third line is "Slum - ber at last." The music features a mix of quarter, eighth, and sixteenth notes, with some rests and ties. The piece concludes with a double bar line.