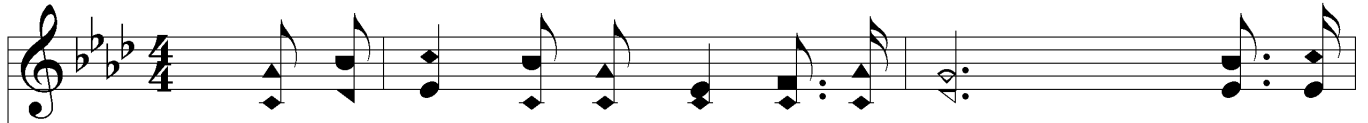
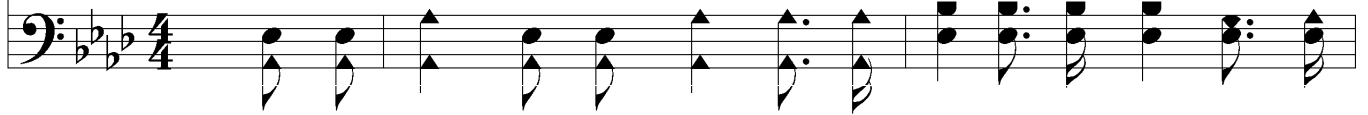


# There's a Friend that Abides



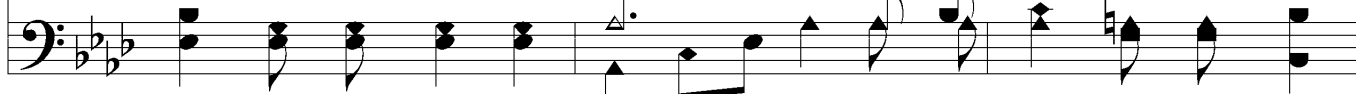
1. There's a Friend that a - bides ev - er - more, And that  
 2. There's a Friend that a - bides ev - er - more, And I  
 3. There's a love that is strong as the hills That en -  
 4. There's a Friend that a - bides ev - er - more, And a

(1. ev - er - more,



Friend is the Lord, my King; Of the peace I re - ceived,  
 praise Him with loud ac - claim; For the life that is mine  
 cir - cles His throne a - bove; How it speaks to my soul  
 Friend that I long to see; O, the song that will break,

*My King;*)



When His Word I be - lieved, In the full - ness of joy I will sing.  
 Thru His mer - cy di - vine; Still I sing in my joy, "Bless His name!"  
 When the dark bil - lows roll, And my heart sings for joy, "God is love!"  
 When to rap - ture I wake, And in glo - ry with Him I shall be!



## Chorus



O come, quick - ly come! He is call - ing you to - day, O come to that



# *There's a Friend that Abides*

Friend so true; kind and true, He will be your faith - ful Guide, More than  
all the world be - side, And re - mem - ber He has died for you. has died for you.  
you, died for you.

*Rall...*

The image shows a musical score for the hymn "There's a Friend that Abides". It consists of two systems of music, each with a treble and bass staff. The first system contains the first two lines of the lyrics. The second system contains the remaining lyrics and includes a "Rall..." marking above the treble staff. The music is written in a key signature of three flats (B-flat, E-flat, A-flat) and a common time signature.