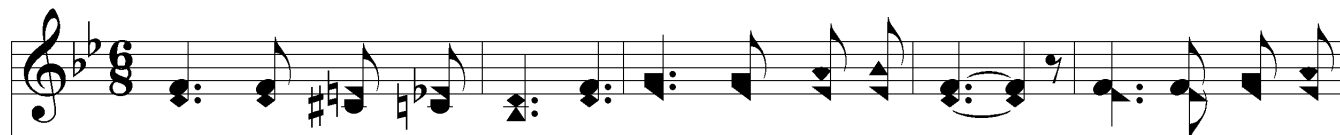
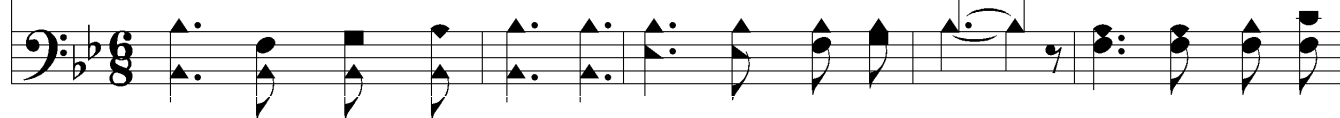


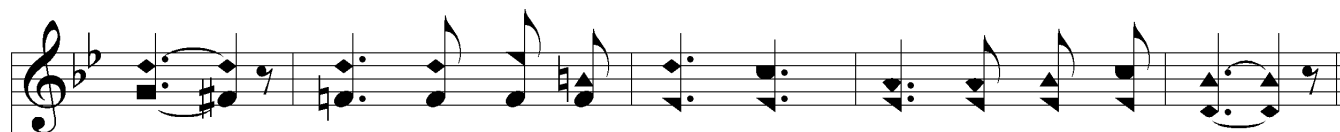
Message Of Love



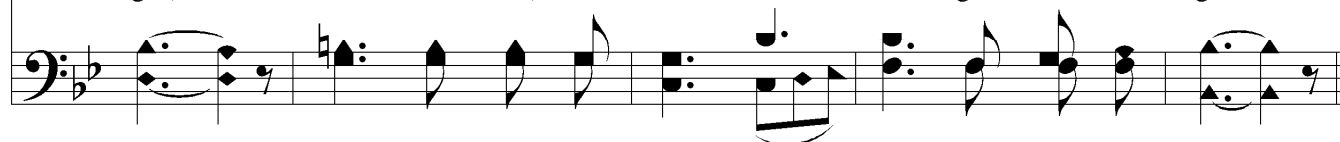
1. Thy Sav - ior is plead - ing, O wand - 'rer, to - day; From sin's vain al -
 2. O trust thy Re - deem - er Once nailed to the tree, And heed now the
 3. From sin's fa - tal slum - ber, O rouse and a - wake! Soon death may o'er
 4. Bright sun - beams of mer - cy Thy path shall il - lume, Dis - pel - ling thy



lure - ments Turn, turn thee a - way, Thru per - fect sur - ren - der Thy war - fare shall
 mes - sage Love bear - eth to thee; Then come, wea - ry pil - grim, By sor - row op -
 take thee, Thy life is at stake! Christ is thy sal - va - tion From fear and from
 dark - ness, Far scat - t'ring thy gloom; They shine with a ra - diance So peace - ful and



cease; How sweet is the mes - sage, Christ giv - eth thee peace.
 pressed, Bring Je - sus thy bur - den, He giv - eth thee rest.
 strife; The Lord hath re - deemed thee, He giv - eth thee life.
 bright; O sin - ner, be - lieve it! Christ giv - eth thee light.



Sweet mes - sage of love For ev' - ry lost soul;
 Sweet mes - sage of love For ev' - ry lost soul;



Message Of Love

Look, sin - ner, to Je - sus For Christ mak - eth thee whole.
Look, sin-ner, to Je-sus ev' - ry whit whole.

The image shows a musical score for the hymn "Message Of Love". It consists of two staves: a treble clef staff on top and a bass clef staff on the bottom. The key signature is one flat (B-flat major or D minor). The melody is written in the treble clef, and the bass line is in the bass clef. The lyrics are written below the treble staff. The first line of lyrics is "Look, sin - ner, to Je - sus For Christ mak - eth thee whole." and the second line is "Look, sin-ner, to Je-sus ev' - ry whit whole." The music features a mix of eighth and sixteenth notes, with some rests and a final cadence.