

# It Cannot Be That When We Die

IT MUST BE TRUE

*Andante con espressione*



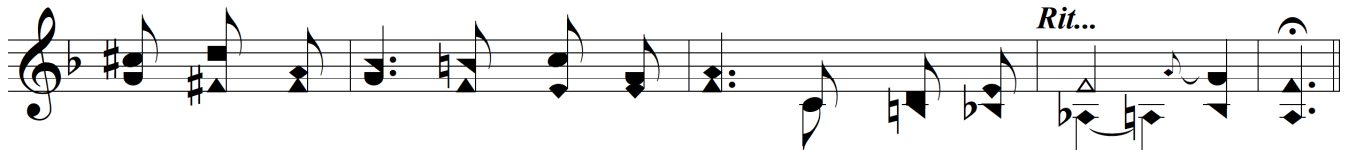
1. It can - not be that when we die, Then all of life is done;  
2. And yet some-times to us it seems That world is ver - y near;  
3. It must be true, else Christ our Lord Would not have told us so;  
4. And so be - neath earth's pris - on - bars We look tow'rd heav'n and home,



There is a bet - ter, bright - er world, That hath no need of sun:  
As some - thing seen or heard in dreams, Its glo - ries then ap - pear.  
He would not dis - ap - point our hearts, His word is sure, we know.  
Where man - sions wait, not made with hands, Where life hath fade - less bloom:

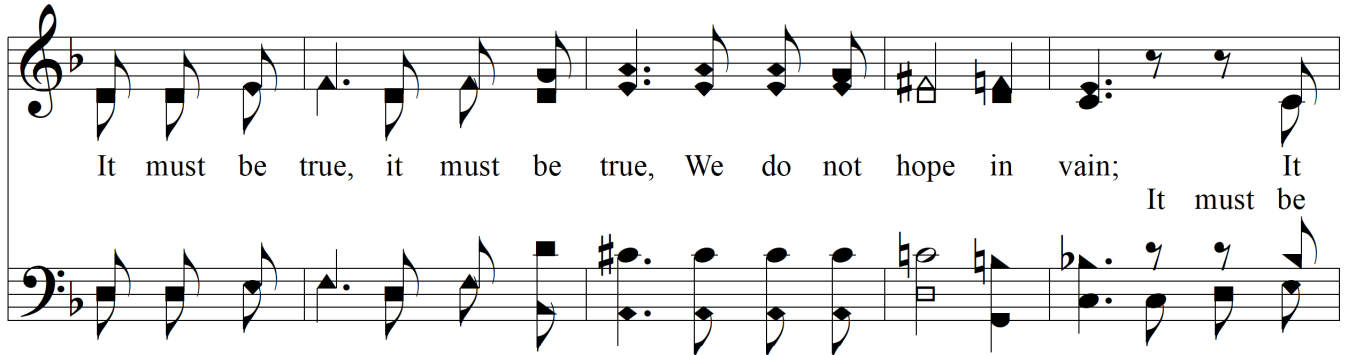


No ear hath heard, no eye hath seen Its mu - sic and its light;  
And when with bat - ed breath we wait, While dear ones fade from view,  
"A place for you!"— how clear, how plain!— He prom - ised to pre - pare,  
And soon, like cap - tive birds set free, We, too, shall take our flight,



The veil of sense hangs dark be - tween, And hides that world from sight.  
We al - most see the heav'n - ly gate Swing back as they pass thru.  
That He, some day, would come a - gain, Him - self to take us there.  
With Christ for - ev - er - more to be, Where faith is lost in sight.

## Refrain



It must be true, it must be true, We do not hope in vain; It  
It must be

## *It Cannot Be That When We Die*

must be true, it must be true, That we shall live a - gain. A - men.  
true, That we shall live a - gain.

The image shows a musical score for the hymn "It Cannot Be That When We Die". It consists of two staves: a treble clef staff on top and a bass clef staff on the bottom. The treble staff contains the vocal melody with lyrics underneath. The bass staff contains the bass line. The music is in a 4/4 time signature and ends with a double bar line and repeat dots. The lyrics are: "must be true, it must be true, That we shall live a - gain. A - men." and "true, That we shall live a - gain."