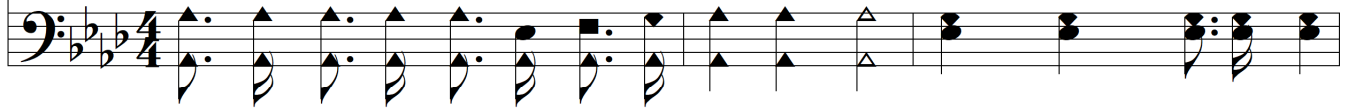


Christ Is All You Need



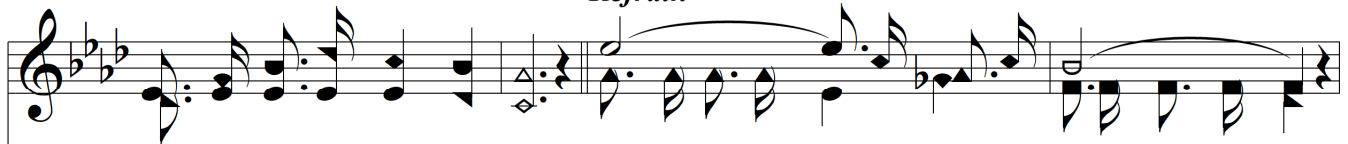
1. Are you heav - y - heart-ed, are you sore dis-tressed?
 2. Have you bro - ken vows and prom - is - es un - kept? Christ is all you need,
 3. Have you been ne - glect - ed for the cause you love?
 4. Let the world de - spise and scorn you as it may, Christ is all you need,



He's a Friend in-deed; Are you o - ver - bur - dened and with care dis-tressed?
 Once de - sert - ed and a - lone thy Sav - ior wept!
 He's a Friend in-deed; You shall be re - ward - ed in the home a - bove;
 You will shout His prais - es in the judg - ment day;



Refrain



Christ is all the Friend you need. Christ is all you need, He is a Friend in-deed;
 Christ is all you need, He is all you need, He is a Friend in-deed;



He's a Friend, He is a Friend in-deed; Christ is all you
 Christ is all you need, For He is a Friend in-deed; Christ is all you need, He



Christ Is All You Need

need,
is a Friend in - deed, Christ is all the Friend you need. A - men.

The image shows a musical score for the hymn "Christ Is All You Need". It consists of two staves: a treble clef staff for the melody and a bass clef staff for the accompaniment. The key signature has three flats (B-flat, E-flat, A-flat), and the time signature is 4/4. The melody begins with a half note G4, followed by a quarter note A4, a quarter note B-flat4, and a quarter note C5. A slur covers the next four notes: D5, E5, F5, and G5. The accompaniment starts with a quarter note G2, a quarter note B-flat2, and a quarter note D3. The lyrics are: "need, is a Friend in - deed, Christ is all the Friend you need. A - men." The score ends with a double bar line and repeat dots.