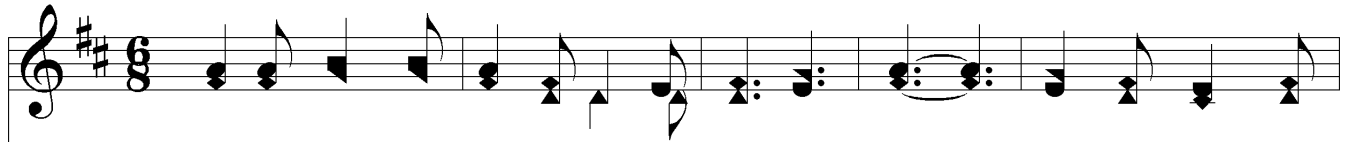
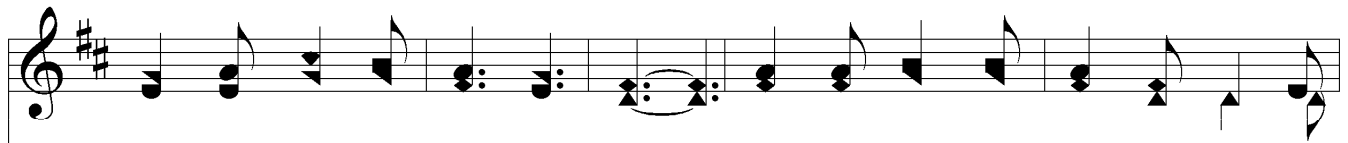


Anywhere With Jesus



1. An - y - where with Je - sus I can safe - ly go, An - y - where He
 2. An - y - where with Je - sus I need fear no ill, Tho' temp - ta - tions
 3. An - y - where with Je - sus I am not a - lone; Oth - er friends may
 4. An - y - where with Je - sus, o - ver land and sea, Tell - ing souls in
 5. An - y - where with Je - sus I can go to sleep, When the dark'n - ing



leads me in this world be - low; An - y - where with - out Him dear - est
 gath - er round my path - way still; He Him - self was tempt - ed that He
 fail me, He is still my own; Tho' His hand may lead me o - ver
 dark - ness of sal - va - tion free; Read - y as He sum - mons me to
 shad - ows round a - bout me creep; Know - ing I shall wak - en, nev - er -



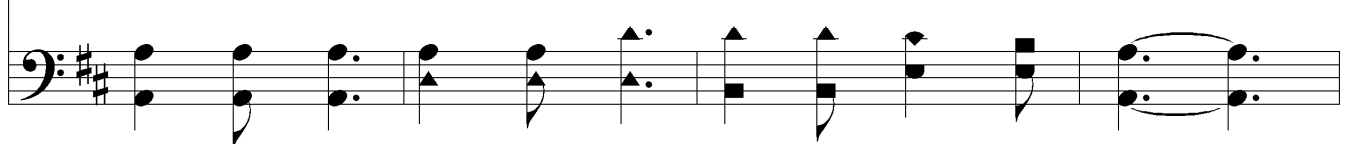
joys would fade; An - y - where with Je - sus I am not a - fraid.
 might help me; An - y - where with Je - sus I my vic - tor be.
 drear - est ways, An - y - where with Je - sus is a house of praise.
 go or stay, An - y - where with Je - sus when He points the way.
 more to roam, An - y - where with Je - sus will be home, sweet home.



Chorus



An - y - where, an - y - where! Fear I can - not know;



Anywhere With Jesus

An - y - where with Je - sus I can safe - ly go.

The image shows a musical score for the hymn "Anywhere With Jesus". It consists of two staves: a treble clef staff on top and a bass clef staff on the bottom. The key signature is one sharp (F#), and the time signature is 4/4. The melody is written in the treble clef, and the bass line is in the bass clef. The lyrics are written below the treble staff. The music ends with a double bar line.