

# A Message Of Love



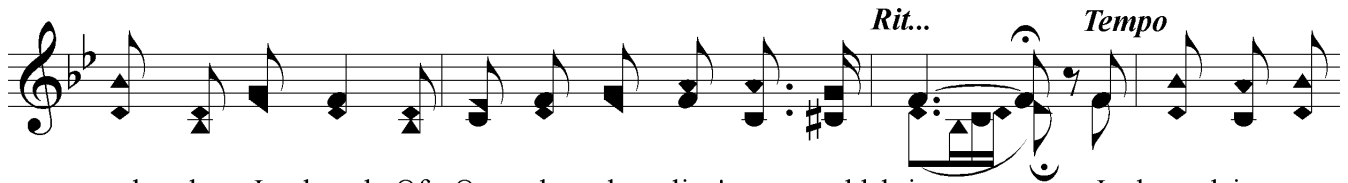
1. There came to my heart a sweet mes - sage of love, When I was for -  
 2. How sweet was the mes - sage that came to my heart, And filled me with  
 3. And since I am His, and I know He is mine, How sweet is the



sak - en and sad; It came from a - bove like a heav - en - ly dove; It  
 sun - shine and song! My hope did a - bound when the Sav - ior I found; I  
 peace He has giv'n! From morn - ing till night He's my joy and de - light, A



bade me re - joice and be glad; New cour - age a - rose in my  
 think of Him all the day long, And fol - low - ing close - ly my  
 bless - ed as - sur - ance of heav'n; In per - fect sub - mis - sion I

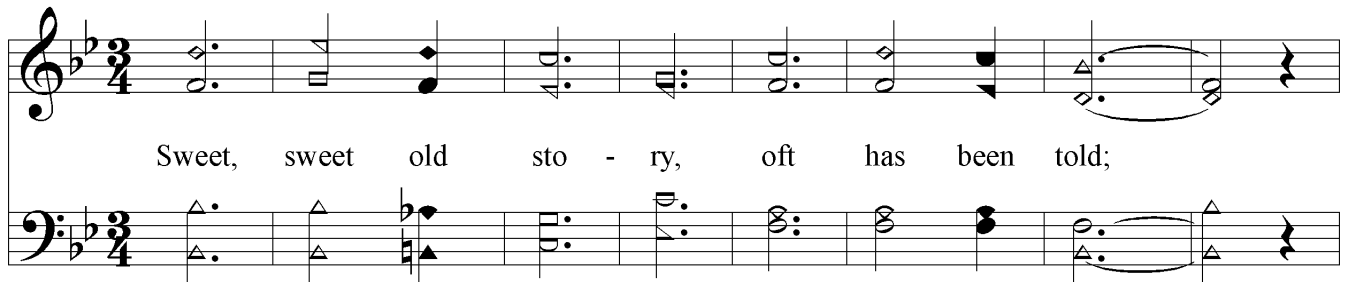


soul when I heard Of One who de - liv - rance could bring; I bowed in con -  
 Shep - herd and Guide, He leads me where cool wa - ters spring; My soul is re -  
 fol - low a - long, For He is my Sav - ior and King; And when I have



tri - tion to Je - sus, my Lord; Now the won - der - ful sto - ry I sing.  
 freshed as in Him I a - bide, And re - joic - ing, His prais - es I sing.  
 joined with the glo - ri - fied throng, Then for - ev - er this theme I will sing.

## Chorus



Sweet, sweet old sto - ry, oft has been told;

# *A Message Of Love*

Won - der - ful sto - ry that nev - er grows old. ne'er grows old.

The image shows a musical score for the hymn "A Message Of Love". It consists of two staves: a treble clef staff on top and a bass clef staff on the bottom. The key signature is one flat (B-flat). The melody is written in the treble clef, and the bass line is in the bass clef. The lyrics are: "Won - der - ful sto - ry that nev - er grows old. ne'er grows old." The first line of the melody corresponds to the first line of the lyrics, and the second line of the melody corresponds to the second line of the lyrics. The music ends with a double bar line.